



## **LabelLase® Producer**

### **Software Installation Manual**



For the following LabelLase® printer models:

LL1000, LL28xx, LL3000, JM410 Metal Tag Printers

LL1000P Plate Printer

KV2-C Histology Cassette Printer

KV2-C1 Single Magazine Cassette Printer

KV2-C4 Four Magazine Cassette Printer

Revision 4

November 30, 2018

InfoSight Corporation

20700 US HWY 23

Chillicothe, Ohio 45601 USA

Copyright © 2018 InfoSight Corporation All Rights Reserved  
InfoSight ® and LabelLase ® are registered trademarks of InfoSight Corporation

IMPORTANT: THE SUBJECT PROGRAMS ARE LICENSED BY INFOSIGHT CORPORATION TO END-USERS FOR THEIR USE ONLY ON THE TERMS BELOW. ACCEPTING AND USING THESE PROGRAMS INDICATES YOUR ACCEPTANCE OF THESE TERMS. THIS IS A LEGAL AGREEMENT BETWEEN YOU, THE END USER, AND INFOSIGHT CORPORATION.

1) GRANT OF LICENSE. InfoSight Corporation ("InfoSight") agrees to grant to you a non-exclusive license to use the InfoSight software program (the "PROGRAM") subject to the terms and conditions of this license agreement.

2) DEFINITION OF TERMS. The term SOFTWARE refers to a computer program stored on a floppy diskette, hard disk drive, magnetic tape, or paper tape that must be loaded into the computer's memory to be executed. The term FIRMWARE refers to a computer program stored in semiconductor memory (ROM, PROM, EPROM, EEPROM, NVRAM, etc.) that is an integral part of the computer's memory. Together, these forms of computer programs are referred to as the "PROGRAM".

3) COPYRIGHT. The PROGRAM(s) and Documentation is owned by InfoSight and is protected by United States copyright laws and by international treaty provisions. The PROGRAM(s) contain trade secrets and proprietary property of InfoSight. You may make one copy of the PROGRAM(s) solely for backup or archival purposes provided that the copy clearly displays the InfoSight copyright notice. Additional copies may be made when authorized to do so in writing by InfoSight. In addition to any other right of InfoSight, InfoSight has the right to terminate this license if the terms of this license are violated.

4) RESTRICTION ON USE AND TRANSFER. The single-processor version(s) of the PROGRAM(s) and Documentation are to be used on one computer or embedded system at any one time. The multi-processor versions(s) of the PROGRAM(s) and Documentation may be used over a network provided that the number of computers accessing the network simultaneously shall not exceed the number authorized by InfoSight or for which you paid the corresponding multi-processor fee. You may not distribute the PROGRAM(s) or Documentation to a third party. You may transfer the license and complete package (retaining nothing) if the transferee agrees to the terms of this License Agreement. Neither the PROGRAM(s) nor the Documentation may be changed or translated without express written permission of InfoSight. You may not reverse engineer, decompile or disassemble the PROGRAM(s).

5) WARRENTY for the subject PROGRAM(s) is covered under the InfoSight Standard Terms and Conditions of Sale.

6) TERM. The license is effective until terminated. It will be terminated if you fail to comply with any term or condition of this License Agreement. You may terminate this License Agreement at any time. In the event of termination, you agree to destroy the PROGRAM(s) and Documentation together with all copies and related materials.

7) YOUR USE OF THIS PROGRAM(S) acknowledges that you have read this License Agreement and agree to its terms. This agreement is complete and supersedes any other agreement that may have related to the subject matter of this agreement.

# Labelase Producer - Software Installation Manual

**Copyright © 2018 InfoSight Corporation All Rights Reserved  
InfoSight ® is a registered trademark of InfoSight Corporation  
Labelase ® is a registered trademark of InfoSight Corporation**

# **Labelase® Producer**

## **Software Installation Manual**

### **Table of Contents**

#### **Introduction**

- Connecting Your Printer
- Types of Connections
- How Do I Choose

#### **Installation**

- System Requirements

#### **Connection Type**

- Selecting Your Connection Type

#### **RS232 Serial COM Port**

- Connecting a Serial COM Port
- Selecting the Port
- Finding the Printer

#### **USB Port**

- Connecting with a USB Port

- Installing the Driver
- Selecting the Port
- Finding the Printer

## **Ethernet Network Connection**

- Connecting via an Ethernet Network Connection
- What You Need to Know
- Connecting the Printer
- IP Address Type
- Searching the LAN for the Printer
- Dynamic IP Address
- Static IP Address
- Installing the Redirector
- Running the Redirector
- Selecting the Port
- Finding the Printer

## **Printer Model**

- Selecting the Printer Model

## **Installing Producer**

- Installing Labelase Producer

## **Finishing the Installation**

# LabelLase® Producer

## Introduction

### Introduction

Thank you for your decision to purchase a LabelLase® printer from InfoSight. Use this guide as a handy reference to get you up and running quickly. It will take you step by step through software and driver installation and configuration and help you verify that everything is working.

Note that this document covers the Installation of LabelLase® Producer and communications drivers for the following InfoSight printers:

Model	Type
LL1000, LL28xx, LL3000, JM410	Metal Tag Printers
LL1000P	Plate Printer
KV2-C	Twelve Magazine Histology Cassette Printer
KV2-C1	Single Magazine Cassette Printer
KV2-C4	Four Magazine Cassette Printer

### Connecting Your Printer

As you proceed with the installation process, you will be instructed to connect your printer to your PC, or to your local area network (LAN) depending on the connection type.



Do not attempt to connect the printer to your PC or network until instructed to do so.

### Type of Connections

How you connect your printer depends on the type of connection you wish to use. Your LabelLase® printer has three different connection options, each with its own advantages and/or disadvantages. You must select one of these three types of connections.

Note: Not all connection types are available on all printers. Contact the factory for details.

## LabelLase Producer - Software Installation Manual



Using a serial COM port is the simplest way to connect the printer to your PC, since it doesn't require you to install any additional drivers or software. However, many newer PC computers do not come with a serial COM port.

Tip: Select this option if you are using a USB to Serial convertor.

---



Most modern PC's come with one or more USB ports. If you select this option, this program will guide you through the installation of the USB driver.

Do not select this option if you are using a USB to Serial convertor device, since it has its own device driver.

---



If your PC is connected to an Ethernet network, you may also connect the printer to the network and access it from your PC. This option requires you to configure the IP address of the printer and install special drivers in your PC.

Note that this does not make the printer a "network printer".

---

## How Do I Choose?

Many factors can influence your choice of connection type for your LabelLase® printer.

If your PC has a serial COM port on it, and that port is not used by any other applications you plan to run on it, then we recommend that you use the COM port to directly connect to the printer. This connection type is the simplest and most reliable, and it doesn't require you to install any special drivers or other software in order for Producer to communicate with the printer.

If your PC does not have a spare COM port, and you intend to locate the printer within a few feet of the PC, then you may wish to use the USB connection to the printer. USB is a standard on virtually every new Windows PC, so chances are your PC has one or more spare ports available. We will lead you through the process of installing the USB drivers on your PC.

If your PC does not have a spare COM port, and you want to locate the printer remotely from the PC that will control it, then we recommend that you use an Ethernet connection to your local area network (LAN.) Although this does not make the printer a "network printer" that can be shared by multiple PC users, it does provide a fast and convenient connection to your new printer.

## Where to Next?

Once you have chosen the type of connection you wish to use with your printer, you may proceed to the next step where you will [Install the Software](#).

**Copyright © 2018 InfoSight Corporation All Rights Reserved  
InfoSight ® is a registered trademark of InfoSight Corporation**



# Labelase® Producer

## Installation

### Minimum Requirements

In order to install and use Labelase® Producer, your PC must have at least the following minimum features.

IBM PC 100% Compatible Computer

Windows 7 / 8 / 8.1 / 10 \*

1 Serial COM port, USB, or Ethernet (for connection to the printer)

Color Monitor (1024x768 resolution or higher recommended)

USB port, CD, or DVD drive (for media)

\* Windows 95/98/Me/NT/2000/XP/Vista are no longer supported by Labelase® Producer. That's not to say that the software won't run on these platforms, but we can't guarantee that it will, and we won't provide technical support if it doesn't work.

- 1 Begin by inserting the installation media into your PC. Provided media may be USB thumb drive, CD, or DVD.

Start the installaation program manually in one of the following ways:

- Using Windows Explorer, navigate to the appropriate drive and double click the program labeled LabelaseInstaller.exe
- Click Start / Run and type in: D:\LabelaseInstaller.exe (substitute the appropriate drive letter as needed.)

- 
- 2 When the Labelase® installer program starts, it will display a welcome screen as shown below.

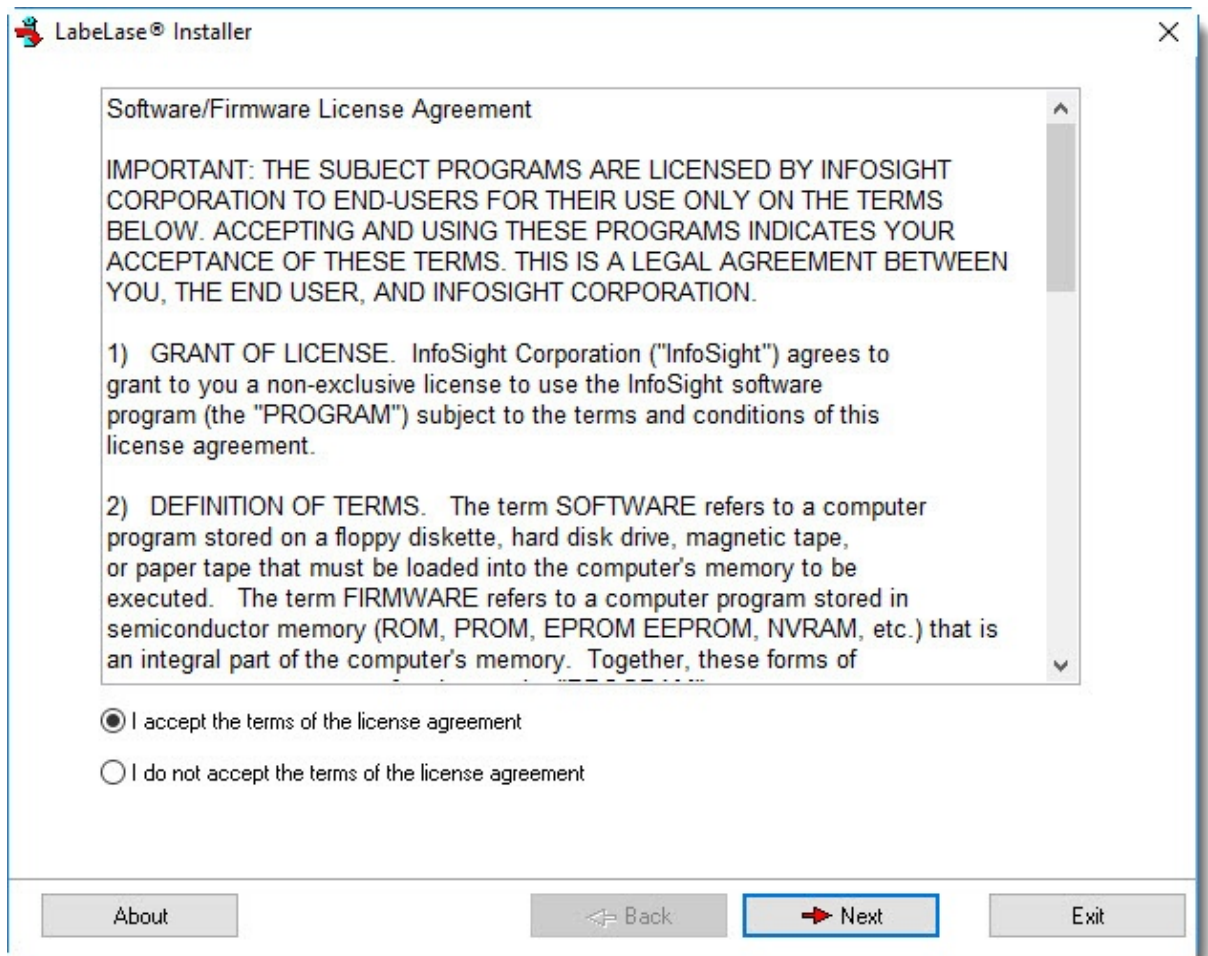


Once you are ready to begin the installation process, click the Next button.

---

3

The next step requires you to read and agree to InfoSight's Software License Agreement.



If you do not agree to be legally bound by this license, simply exit the program now. Otherwise, click "I accept the terms..." and then click the Next button.

---

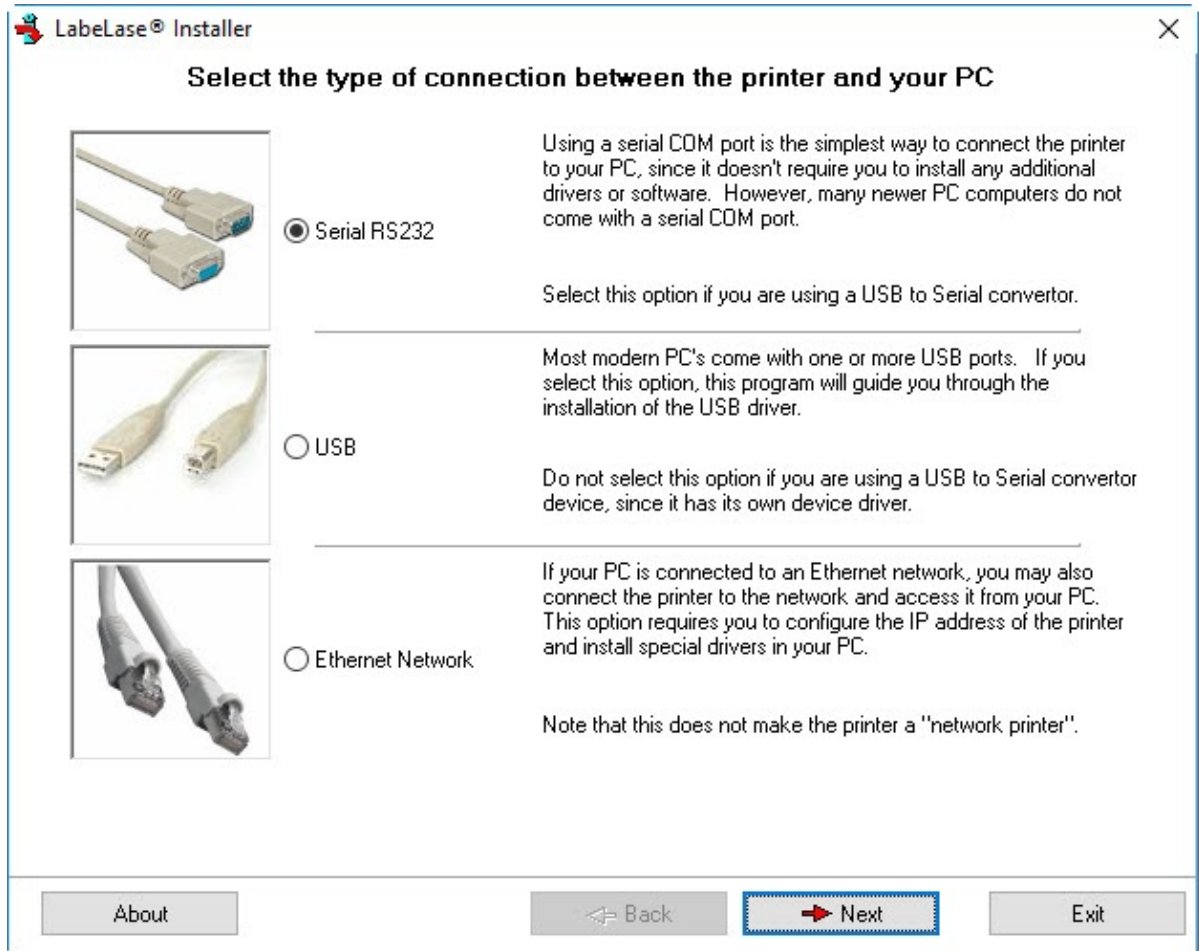
After agreeing to the terms of our license, you will continue on to the next step where you will indicate which method you wish to use to connect your PC to the new printer.

Copyright © 2018 InfoSight Corporation All Rights Reserved  
InfoSight ® is a registered trademark of InfoSight Corporation

# Labelase® Producer

## Connection Type

- 4 Select the type of connection between your PC and the Labelase® printer



Based on your choice for connecting the printer, click the appropriate radio button (or click on the picture of the cable) and then click Next.



If you chose to connect the printer using a serial RS232 communications port, continue on to Step 5.



If you chose to connect the printer using a USB port, continue on to Step 6.



If you chose to connect the printer using an Ethernet network connection, continue on to Step 7.

---

Copyright © 2018 InfoSight Corporation All Rights Reserved  
InfoSight and Labelase are registered trademarks of InfoSight Corporation

## Labelase® Producer



### Serial RS232 COM Port

5

Connecting the printer to your PC's serial COM port requires a serial cable with DB9 connectors. The printer is shipped with this type of cable.

---

5a

Locate the serial COM port on the back of the printer as shown in the figure below. Note that the photo shows the back of an LL1000 model printer and your printer may have the serial port in a different location.



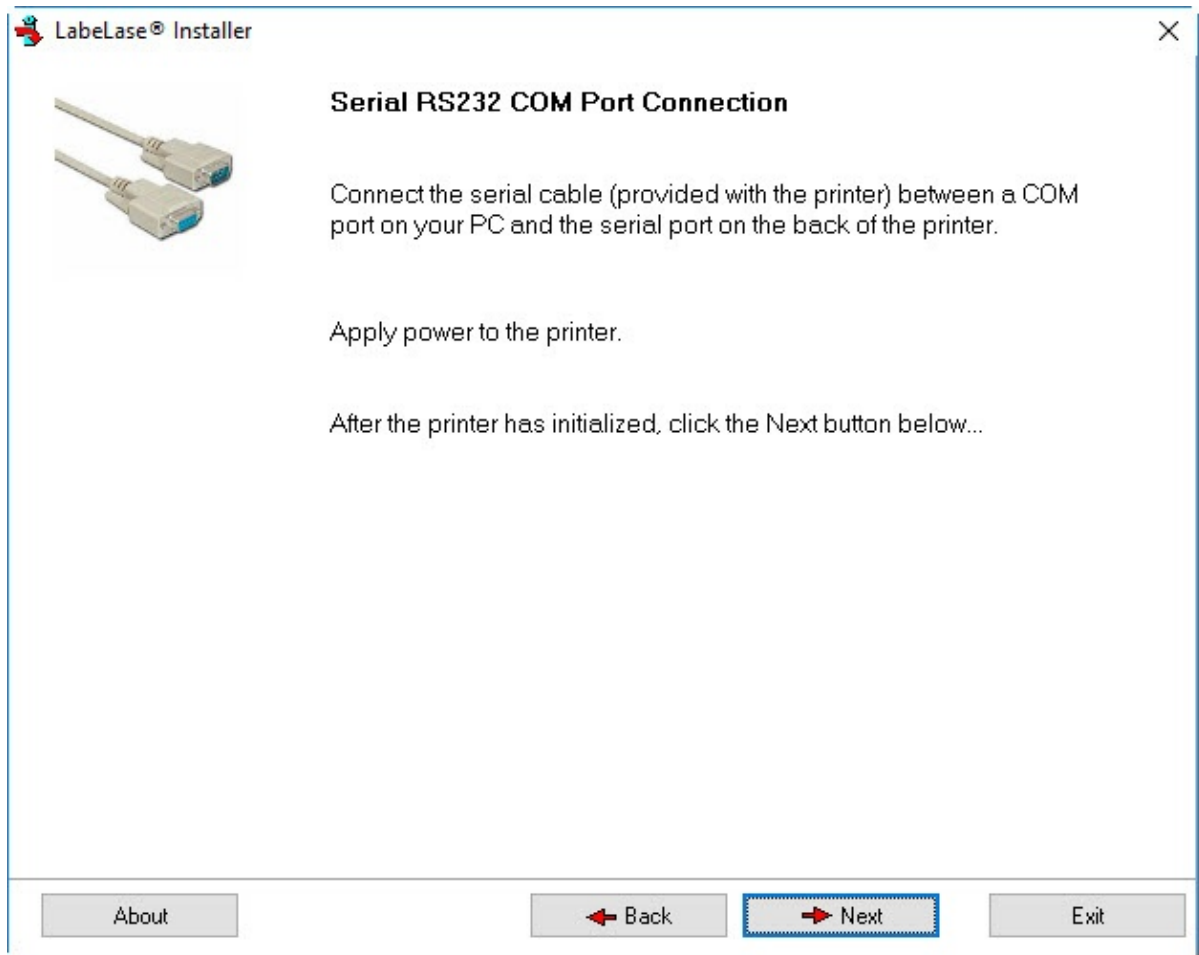
Connect one end of the serial cable to this port, and the other end of the cable to a similar port on your PC.

Turn the printer ON and wait for it to initialize.

---

5b

After you selected Serial RS232 as your connection type, you will see a screen that looks similar to the one shown below.



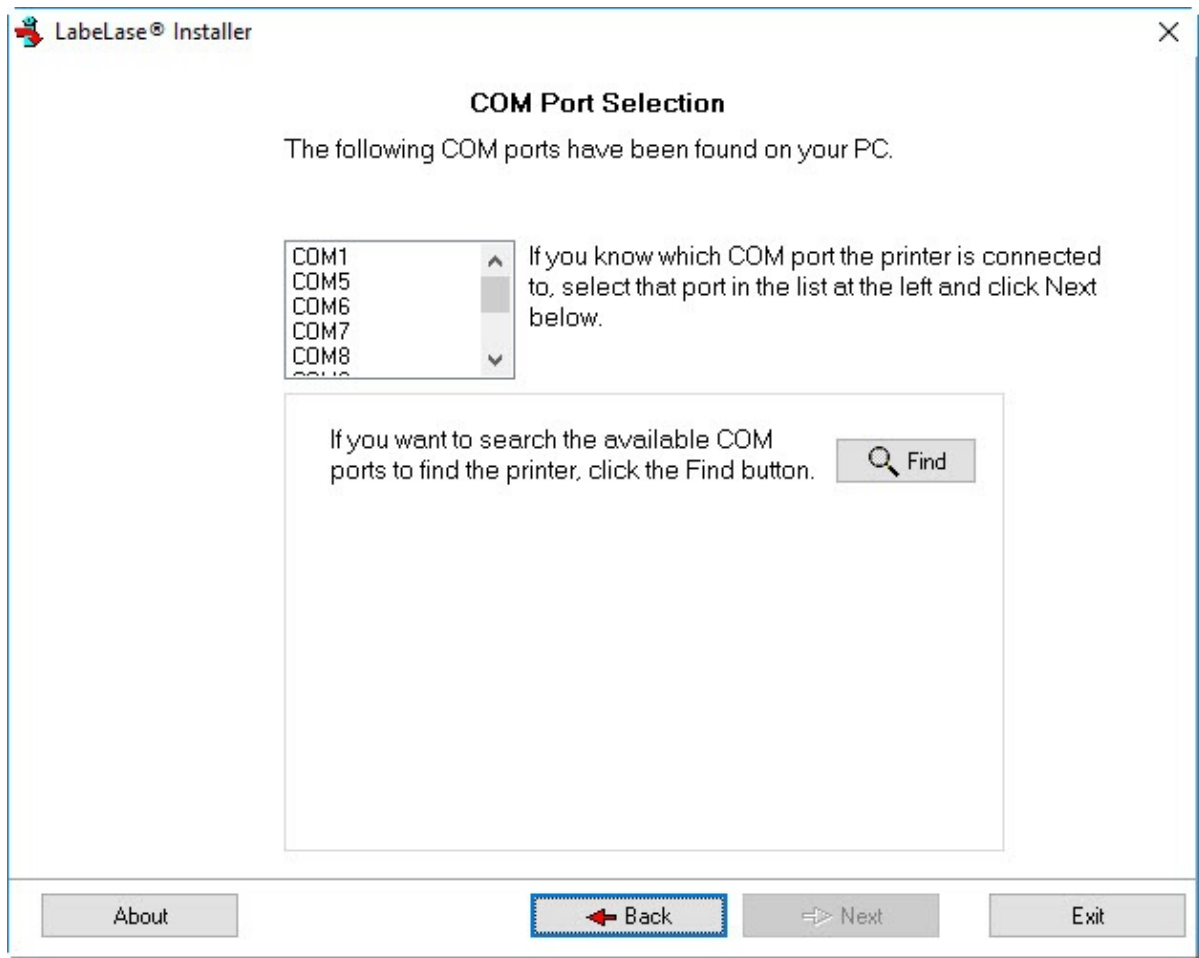
Click Next to select or find the COM port where the printer is connected.

---

5c

The installer will show you a list of COM ports that are installed on your PC as shown below.

Note that the actual list of COM ports will vary from this figure depending on the number of ports that are installed on your PC.



If you know what port you have connected the printer to, you can simply click on that port name to select it and then click the Next button.

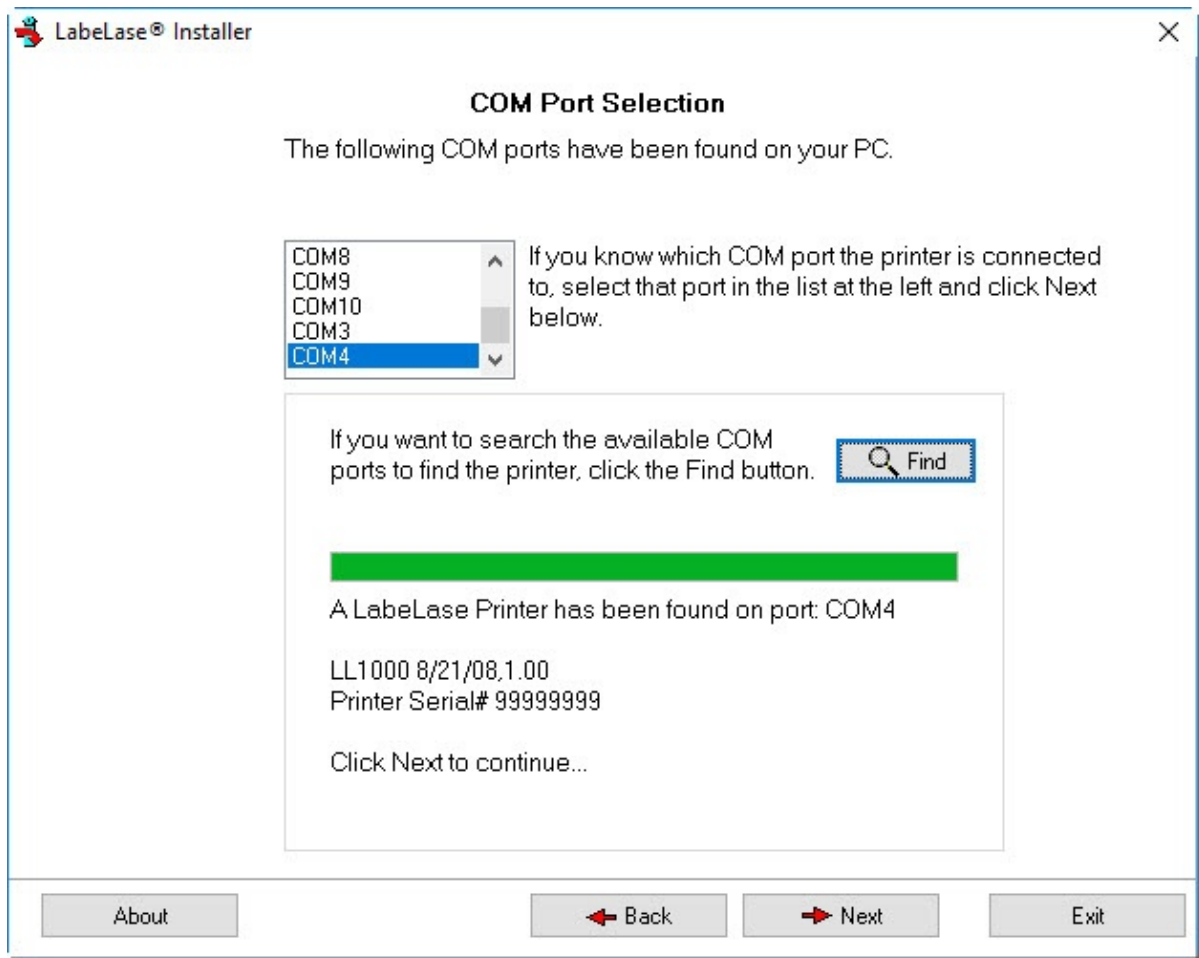
If you want to test the port to make sure it can communicate to the printer, proceed to step 5d below.

---

**5d**

If your not sure what the port name is or you want to test the port connection, click the Find button. The program will attempt to communicate with the printer on each of the COM ports in the list.





As you can see in the figure above, the program found a LL1000 model printer on the COM4 port. It has displayed its model number, firmware version and the printer's serial number.

---

**5e** Once you have selected or found the COM port that the printer is attached to, click the Next button to continue.

If you did not use the Find button, or the program was not able to communicate with the printer, then you will skip to [Step 8](#) where you will select your printer model from a list.

If you used the Find button, and the program successfully found and communicated with the printer, you will skip to [Step 9](#) where you will install the version of Labelase® Producer that is appropriate for your printer model.

---

## LabelLase Producer - Software Installation Manual

**Copyright © 2018 InfoSight Corporation All Rights Reserved**  
**InfoSight and LabelLase are registered trademarks of InfoSight Corporation**

## Labelase® Producer



### USB Port

6

Connecting the printer to your PC's USB port requires a standard USB cable. The printer is shipped with this type of cable if it has the USB option installed.

---

6a

Locate the USB port on the back of the printer as shown in the figure below. Note that your printer model may look different than pictured here.



Connect one end of the USB cable to this port on the printer, but **DO NOT** connect the other end of the cable to your PC.

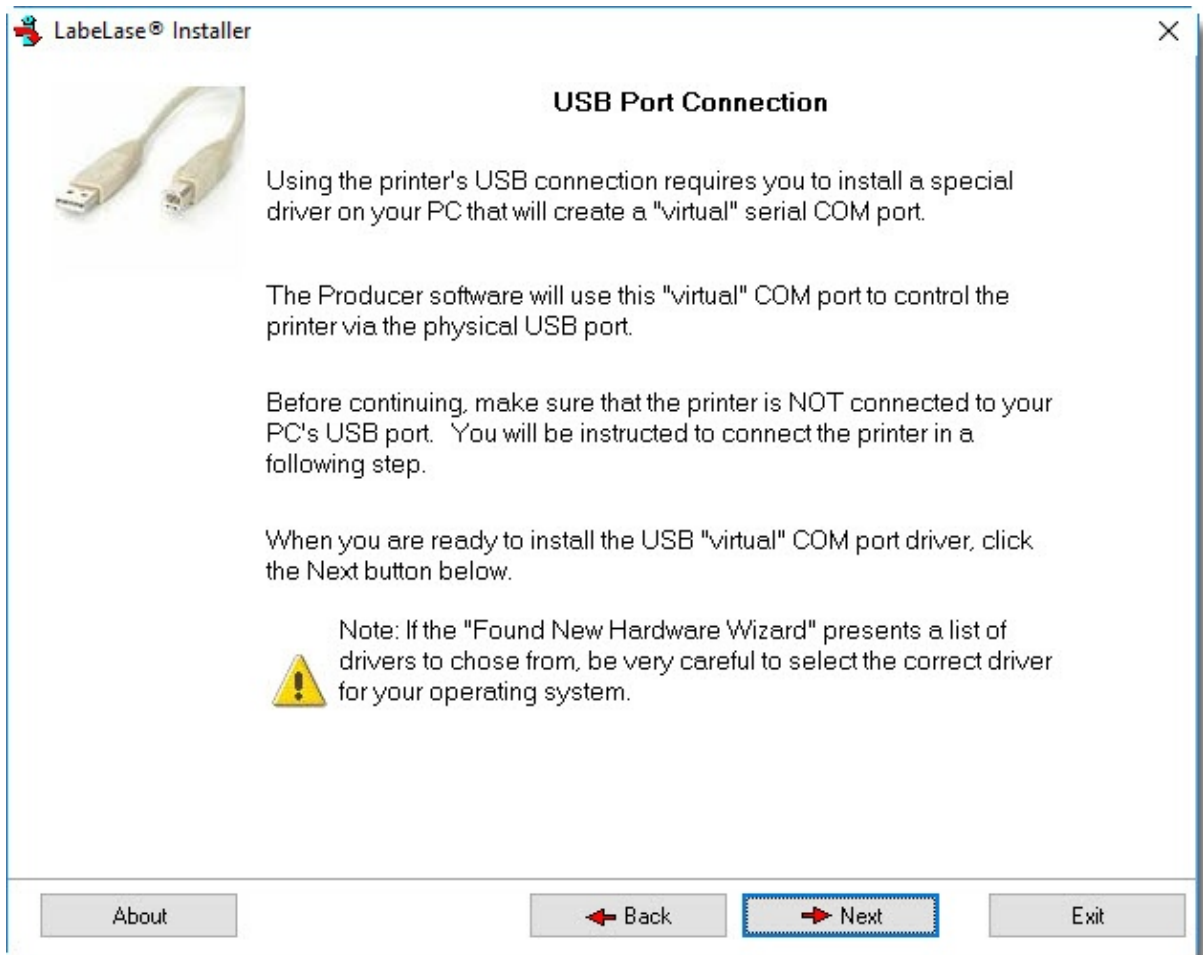
It is important that you wait until instructed to connect the USB cable to your PC

Turn the printer ON and wait for it to initialize.

---

6b

After you selected USB as your connection type, you will see a screen that looks similar to the one shown below.

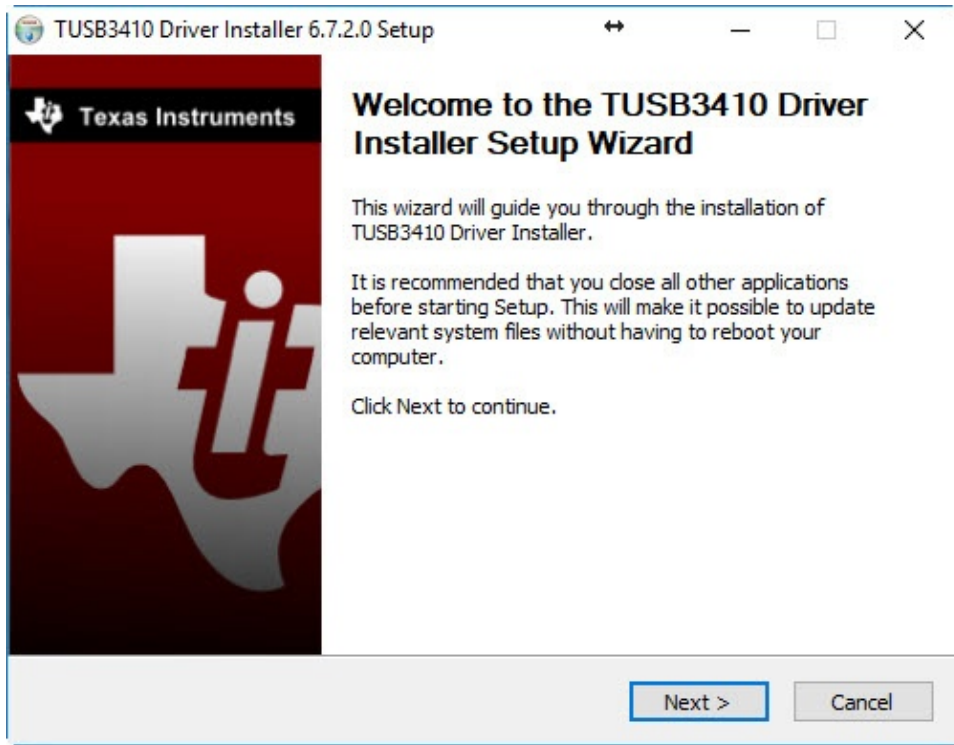


Even though you are using a USB port to connect your PC to the printer, the Labelase® Producer software still expects to talk to the printer via a COM port. To make this work, the USB driver that you are about to install will create a "virtual" COM port that will fool Producer into thinking it is talking to a standard COM port, but will in fact use the USB connection.

When you are ready to install the USB "virtual" COM port driver, click Next.

6c

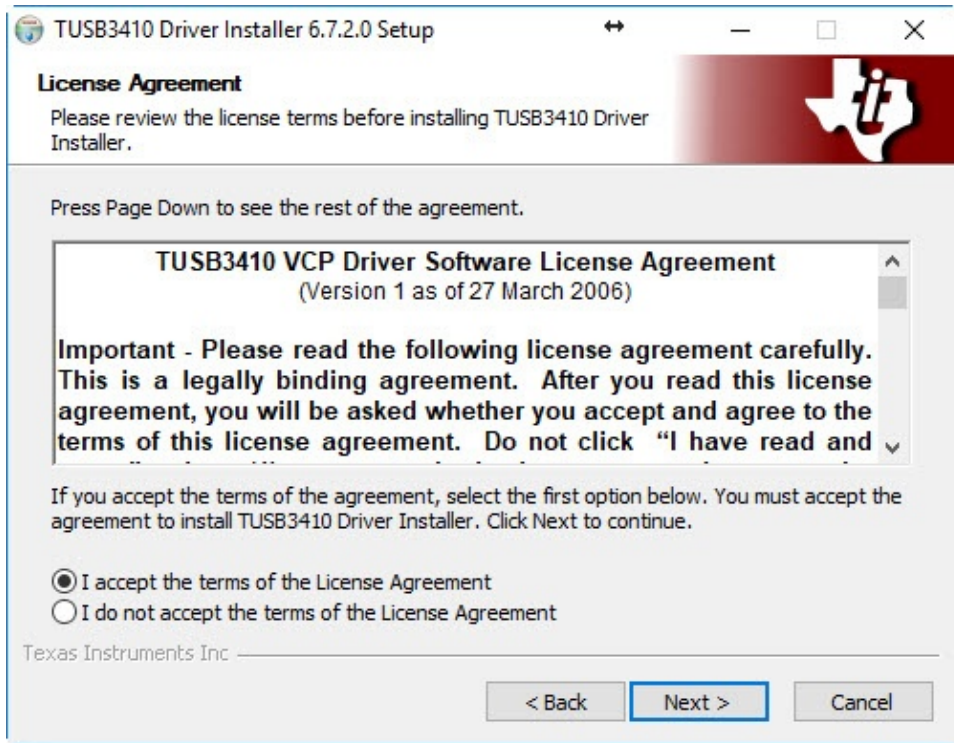
When the USB installer (also called the VCP installer) begins, you will see a screen like that shown below. Note that the appearance of the screen may vary according to your operating system version.



You will need to read and agree to the Software License Agreement for the USB drivers.

---

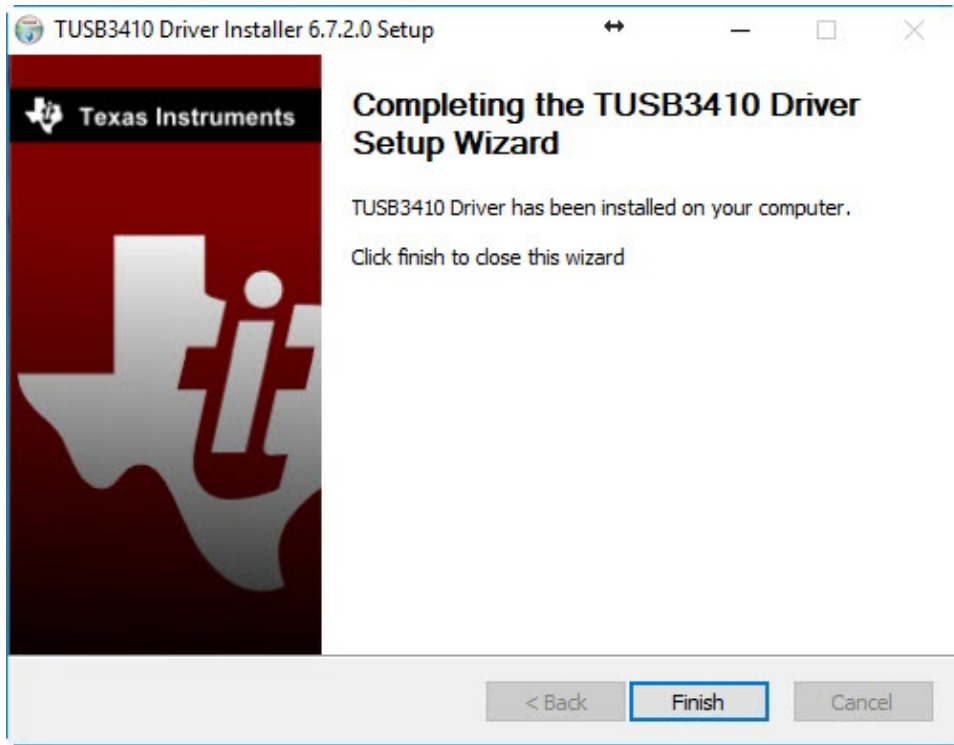
- 6d You must agree to the Texas Instruments license agreement to continue with the driver installation.



Select the I Accept radio button and click the Next button to continue.

6e

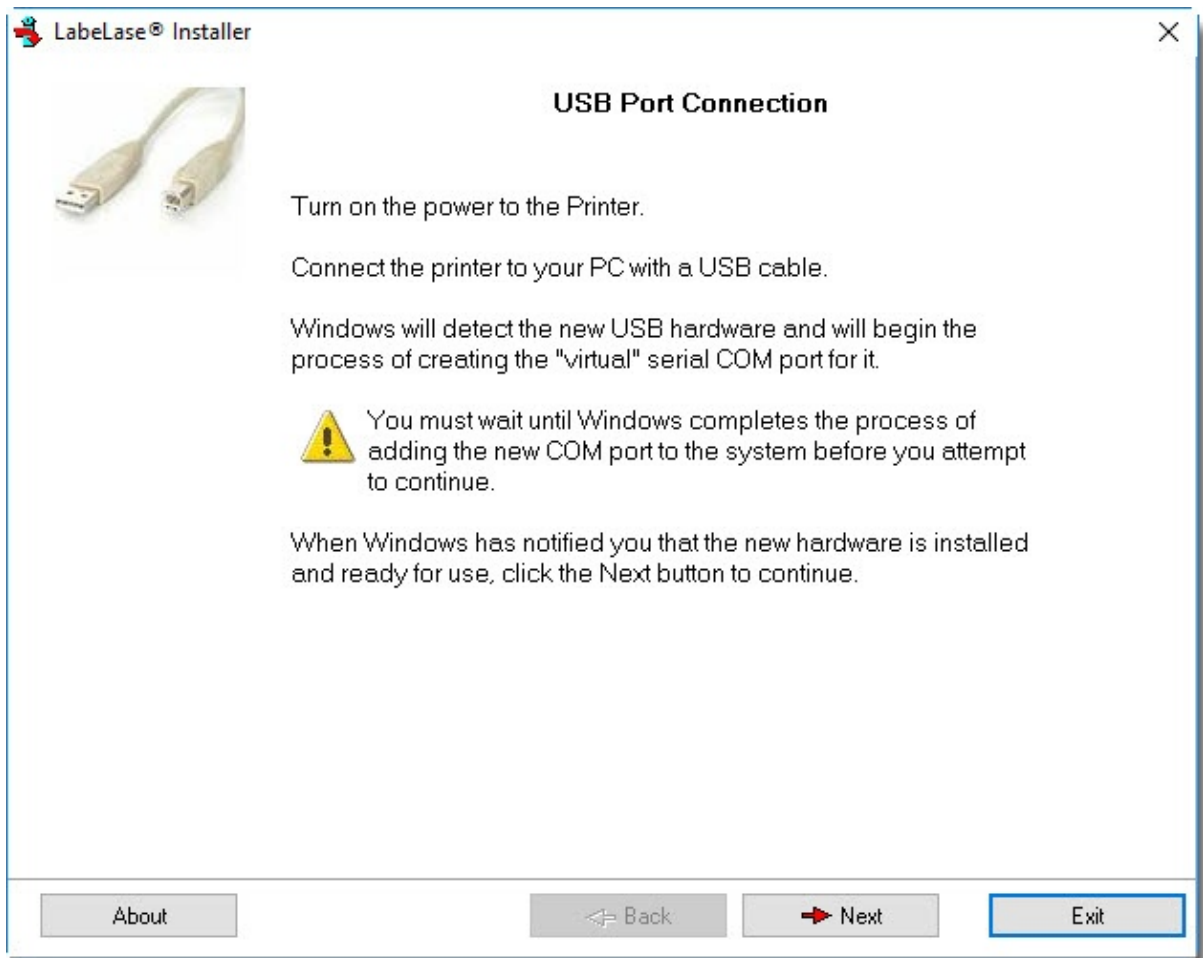
After the USB driver has been successfully installed, you will see a screen similar to the one shown below.



Click the Finish button to continue with the installation.

---

- 6f After the USB driver installation has completed, the LabelLase® Installer will present the screen shown below.

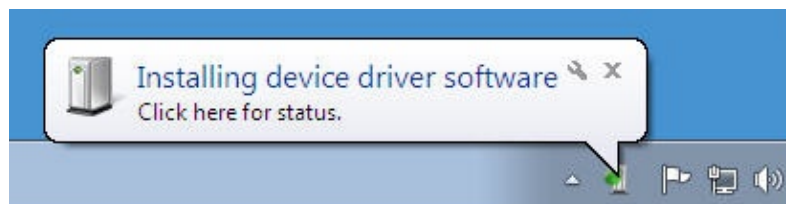


It's now time to connect the printer's USB cable to an unused USB port on your PC. Make sure that the printer's power is on and that it has completed its initialization before connecting the cable.

6g

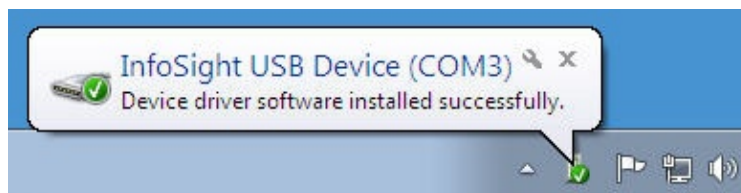
A few seconds after you connect the USB cable to your PC, Windows will detect the newly added hardware and will display a notice in the system tray. The next step differs depending upon the version of Windows.

## Windows 7





On computers running Windows 7, the Found New Hardware notice may also be accompanied by a security warning. Allow the driver to install. The driver installation usually completes without further action, and Windows will notify you that the device driver software was installed successfully.



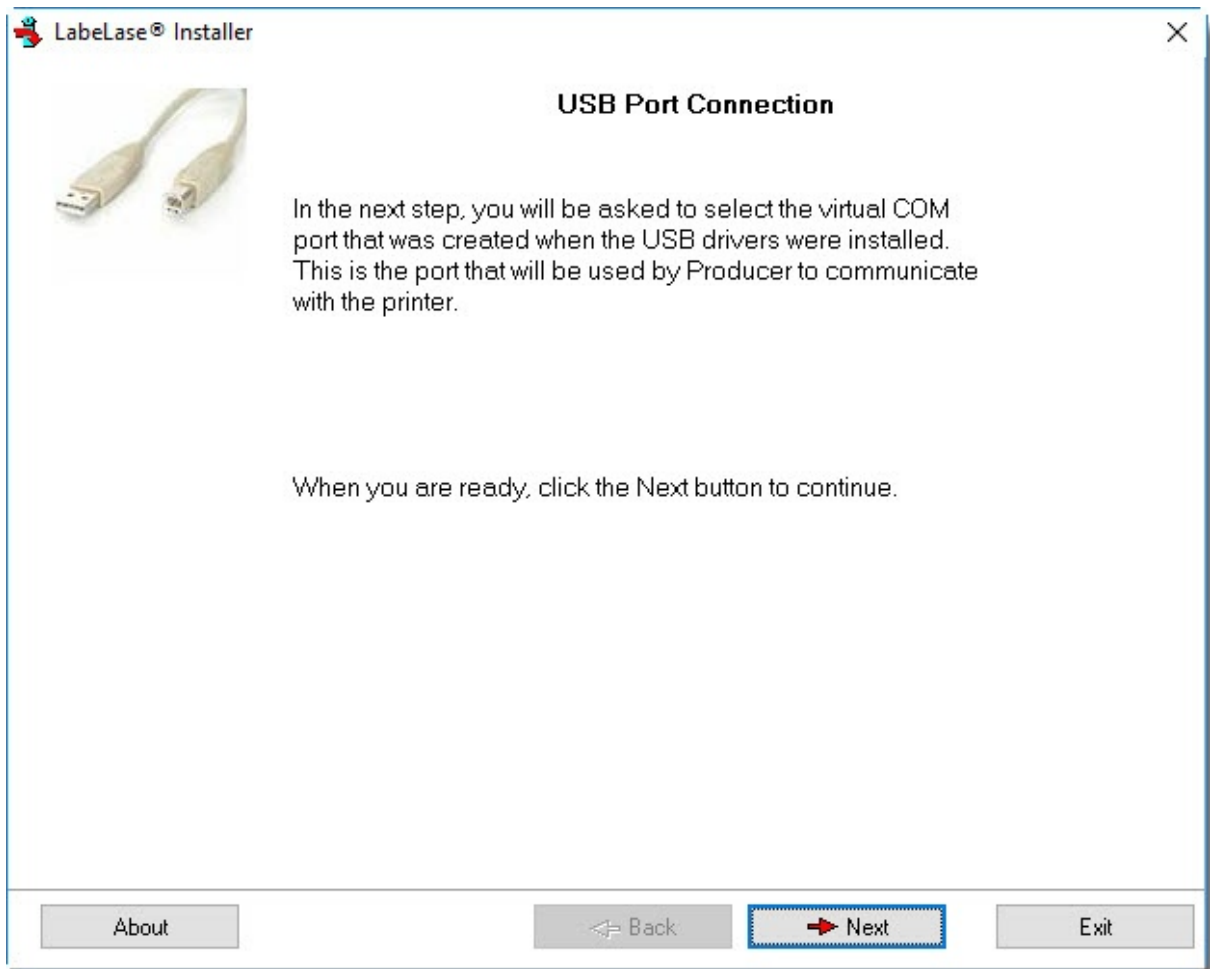
Proceed to step 6h

Click Next to continue.

---

**6h**

Once Windows tells you that the new hardware is installed and ready to use, you can continue with the LabelLase Installer below.



Now that the USB drivers have been installed, there should be a new COM port added to your system that is actually the "virtual" port.

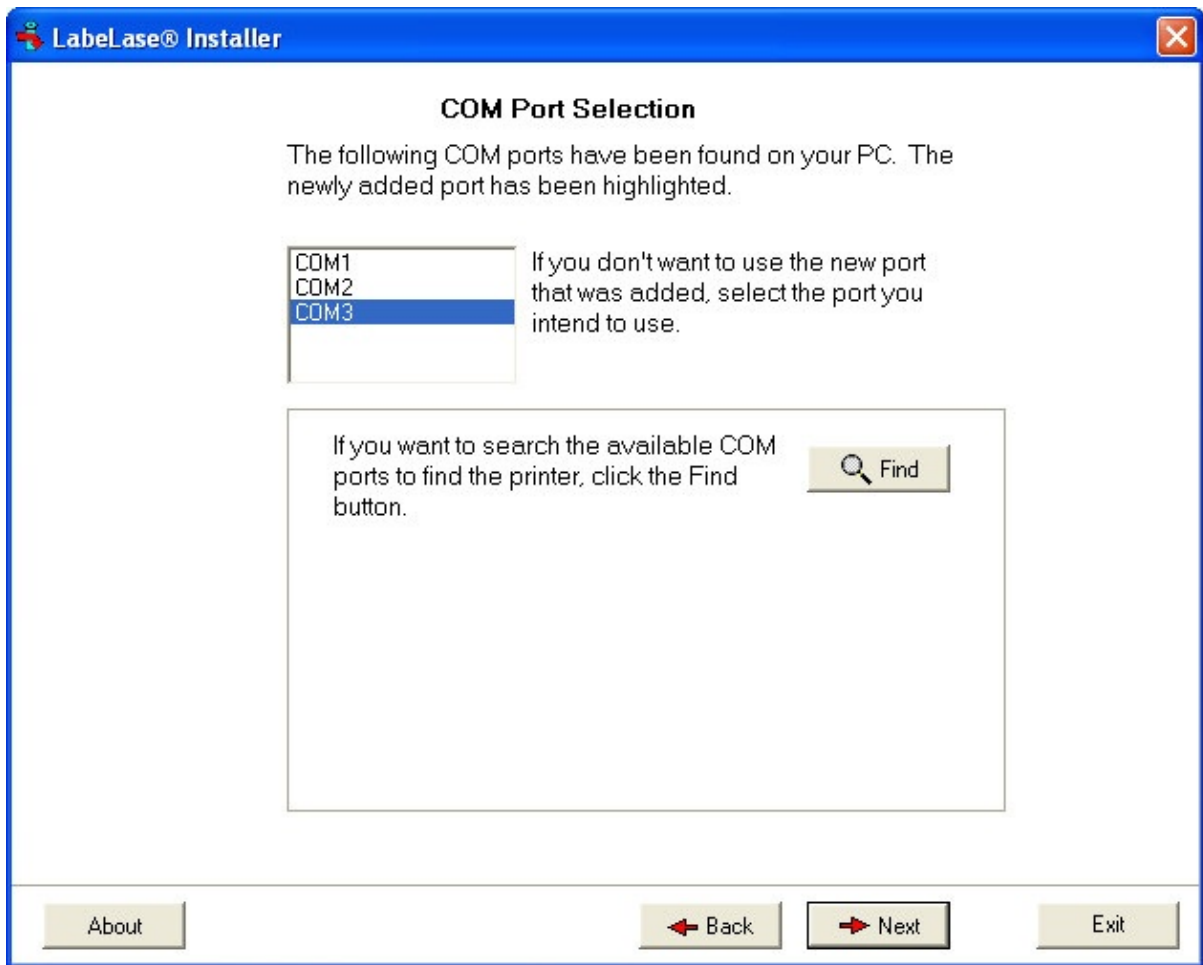
When you click Next on this screen, the program will attempt to find the newly added "virtual" COM port.

---

6i

After you have installed the USB virtual COM port, you will see a screen that looks similar to the one shown below.

Note that the actual list of COM ports will vary from this figure depending on the number of ports that are installed on your PC.



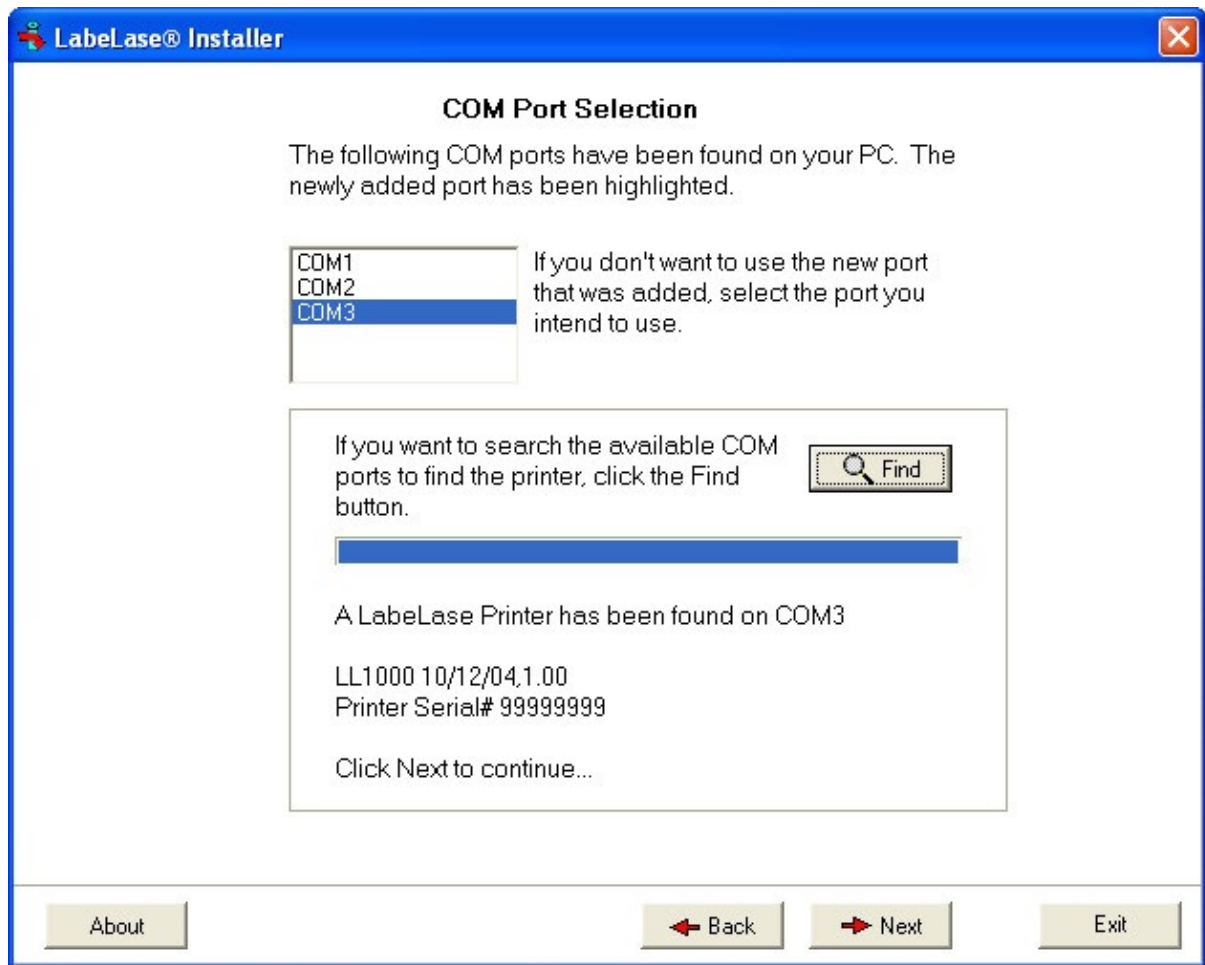
The installer program detected the addition of COM3 when the USB drivers were installed, so it has highlighted that port name in the list. If you wish, you can now click Next to continue to the next step.

If you want to test the port to make sure it can communicate to the printer, proceed to step 6j below.

Note that if you are running this installation program for a second time, you may have already added the new COM port during the previous installation. In that case, the installer will not detect the addition of a new port so you will be required to select it yourself in the list of ports before you can continue.

6j

If you're not sure what the port name is or you want to test the port connection, click the Find button. The program will attempt to communicate with the printer on each of the COM ports in the list.



As you can see in the figure above, the program found a LL1000 model printer on the COM3 port. It has displayed its model number, firmware version and the printer's serial number.

---

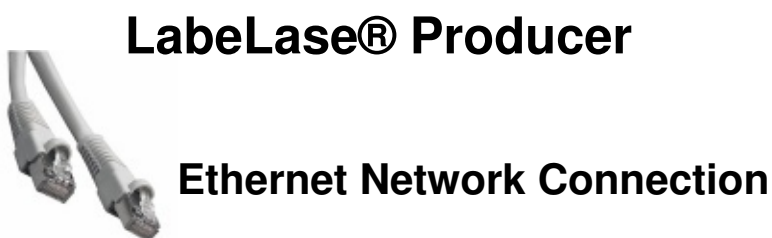
**6k** Once you have selected or found the COM port that the printer is attached to, click the Next button to continue.

If you did not use the Find button, or the program was not able to communicate with the printer, then you will skip to [Step 8](#) where you will select your printer model from a list.

If you used the Find button, and the program successfully found and communicated with the printer, you will continue on to [Step 9](#) where you will install the version of LabelLase® Producer that is appropriate for your printer model.

---

**Copyright © 2018 InfoSight Corporation All Rights Reserved**  
**InfoSight and LabelLase are registered trademarks of InfoSight Corporation**



**7** Connecting the printer to your PC via an Ethernet Network connection requires one of two connection types.

- The printer is normally connected to your local area network (LAN) via a standard patch cable and either a network switch or hub.
  - The printer can be directly attached to your PC's Ethernet port via a special cable called a cross-over cable.
- 

**7a** Before you can begin connecting the printer to your LAN, you will need several pieces of information. If you're not sure how to supply the following information, contact your Network Administrator for assistance.

## What You Need to Know

### Hardware Address

You need to know the printer's hardware address (also known as a MAC address). It is on a label on the bottom of the printer, in the format: 00-20-4A-XX-XX-XX, where the XXs are unique numbers assigned to the printer.

Hardware Address:      00-20-4A-\_\_\_\_-\_\_\_\_-\_\_\_\_

### IP Address

Your printer must have a unique IP address on your network. The Network Administrator generally provides the IP address, subnet mask, and gateway. The IP address must be within a valid range, unique to your network, and in the same subnet as your PC.

IP Address:      \_\_\_\_\_  
Subnet Mask:    \_\_\_\_\_  
Gateway:        \_\_\_\_\_

You have two options for assigning an IP to your printer. If your Network Administrator assigns IP addresses manually (called a static address), obtain the required information from your administrator.

If devices on your network obtain their IP addresses from a DHCP server (called a dynamic address,) then you won't need to know what the IP address, subnet mask or gateway are as the printer will get them automatically.

---

### 7aa Locate the Ethernet jack (RJ45) on the back of the printer as shown in the figure below.



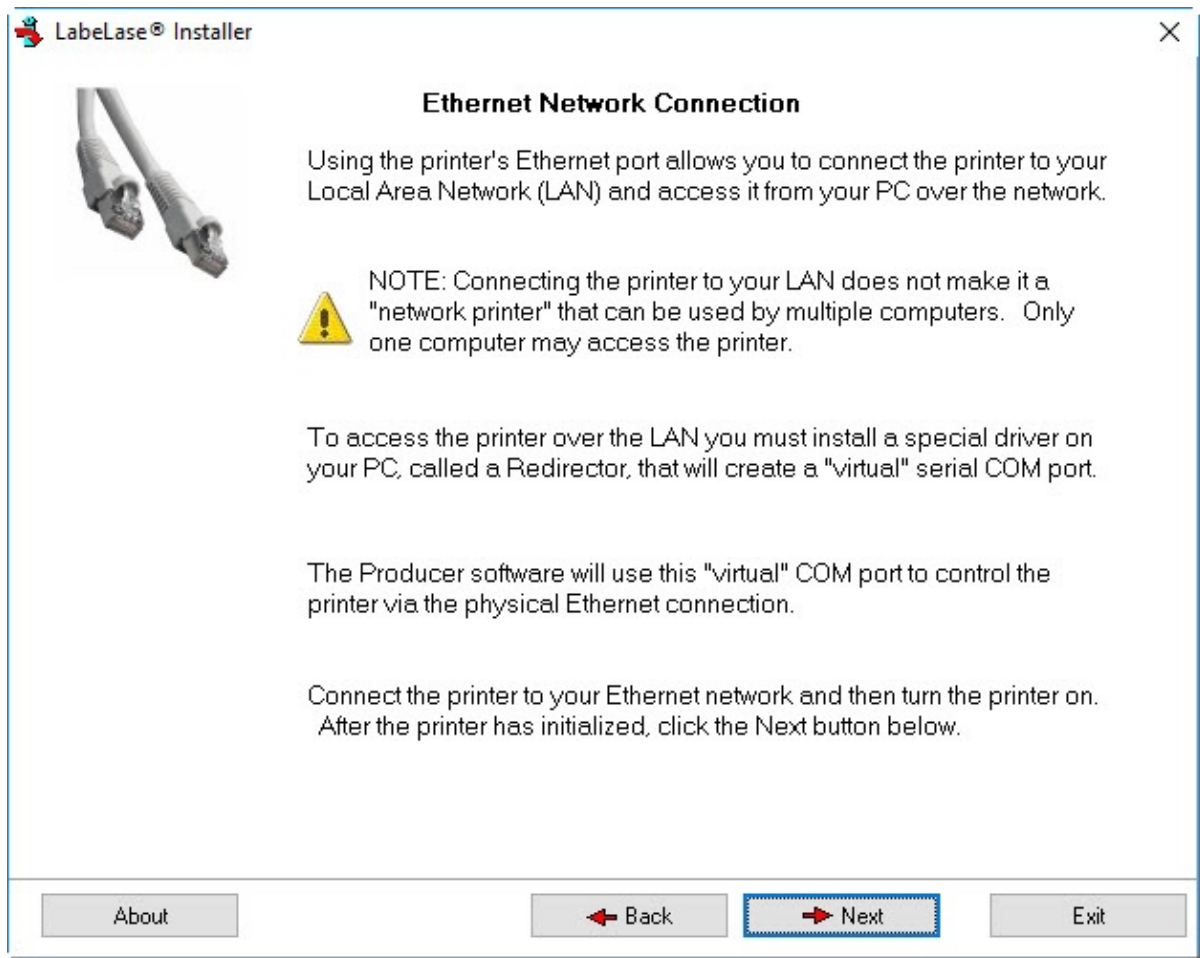
Connect one end of the Ethernet cable to this jack on the printer, and the other end to a network switch or hub.

You may instead connect the printer directly to your PC with a cross-over cable (no switch or hub).

Turn the printer ON and wait for it to initialize.

---

### 7b After you selected Ethernet as your connection type, you will see a screen that looks similar to the one shown below.



Even though you are using an Ethernet network connection to connect your PC to the printer, the Labelase® Producer software still expects to talk to the printer via a COM port. To make this work, the software that you are about to install, called a Redirector, will create a "virtual" COM port that will fool Producer into thinking it is talking to a standard COM port, but will in fact use the Ethernet connection.

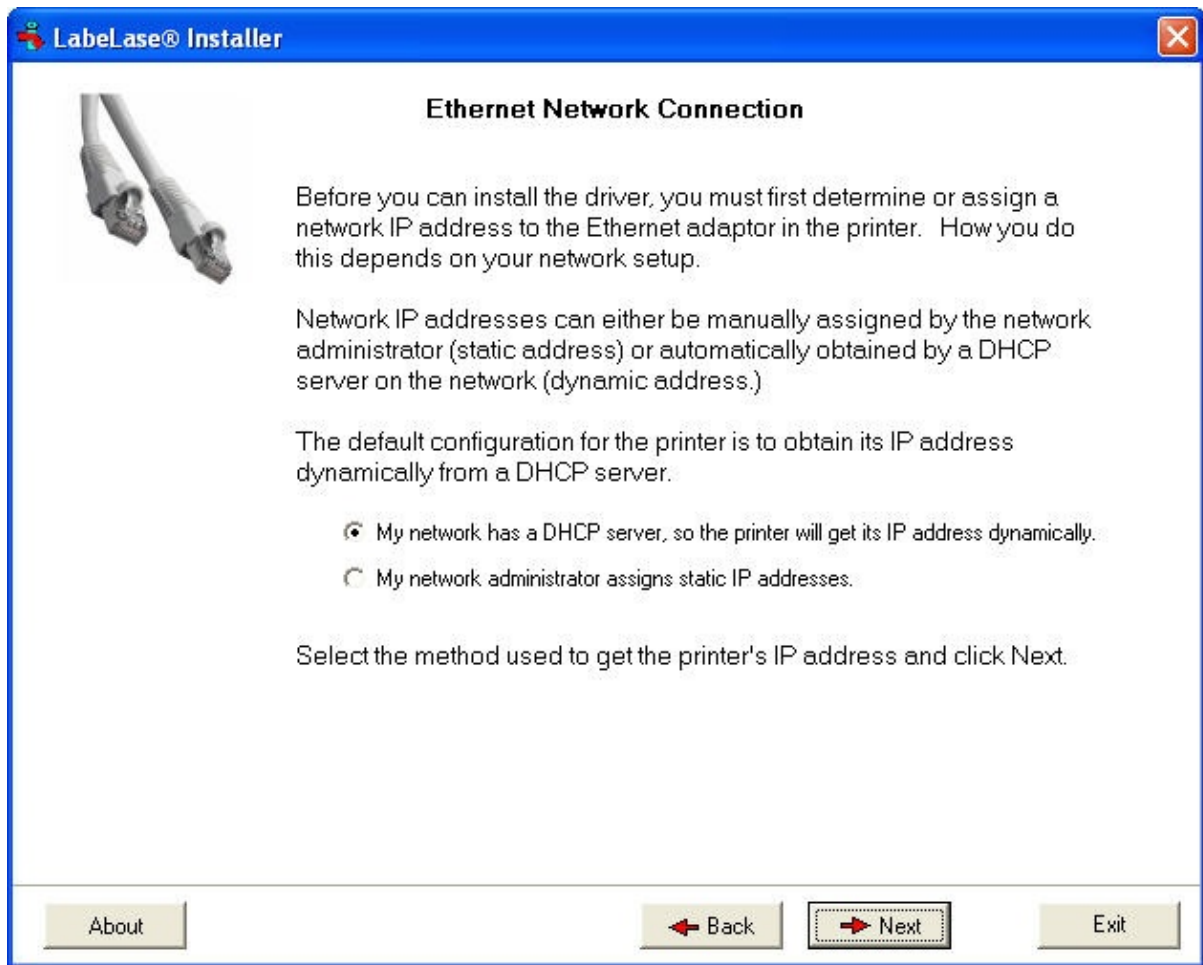
When you are ready to continue with the installation, click Next.

---

7c

In the next screen, shown below, you must tell the program how you want to assign its IP address, subnet mask and gateway.

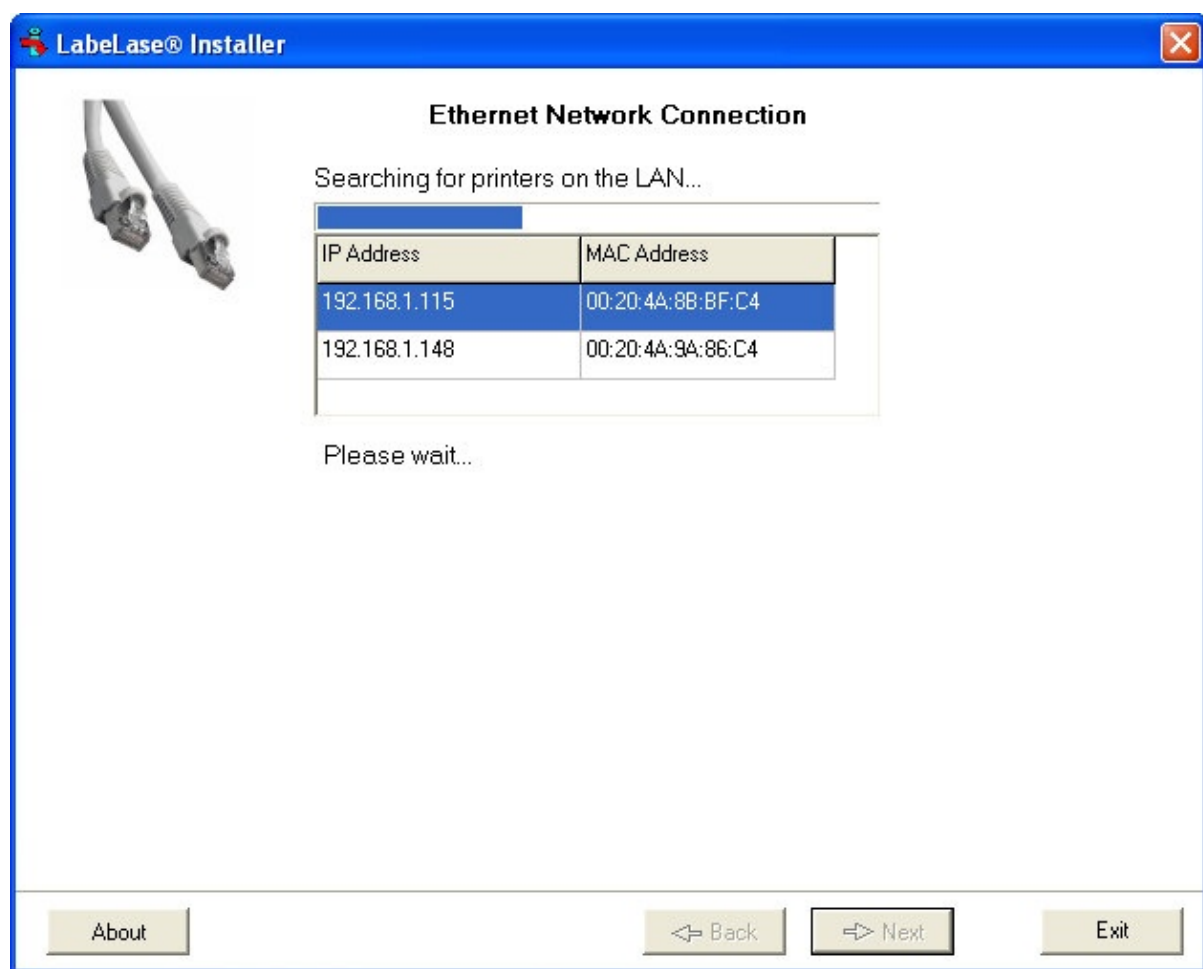




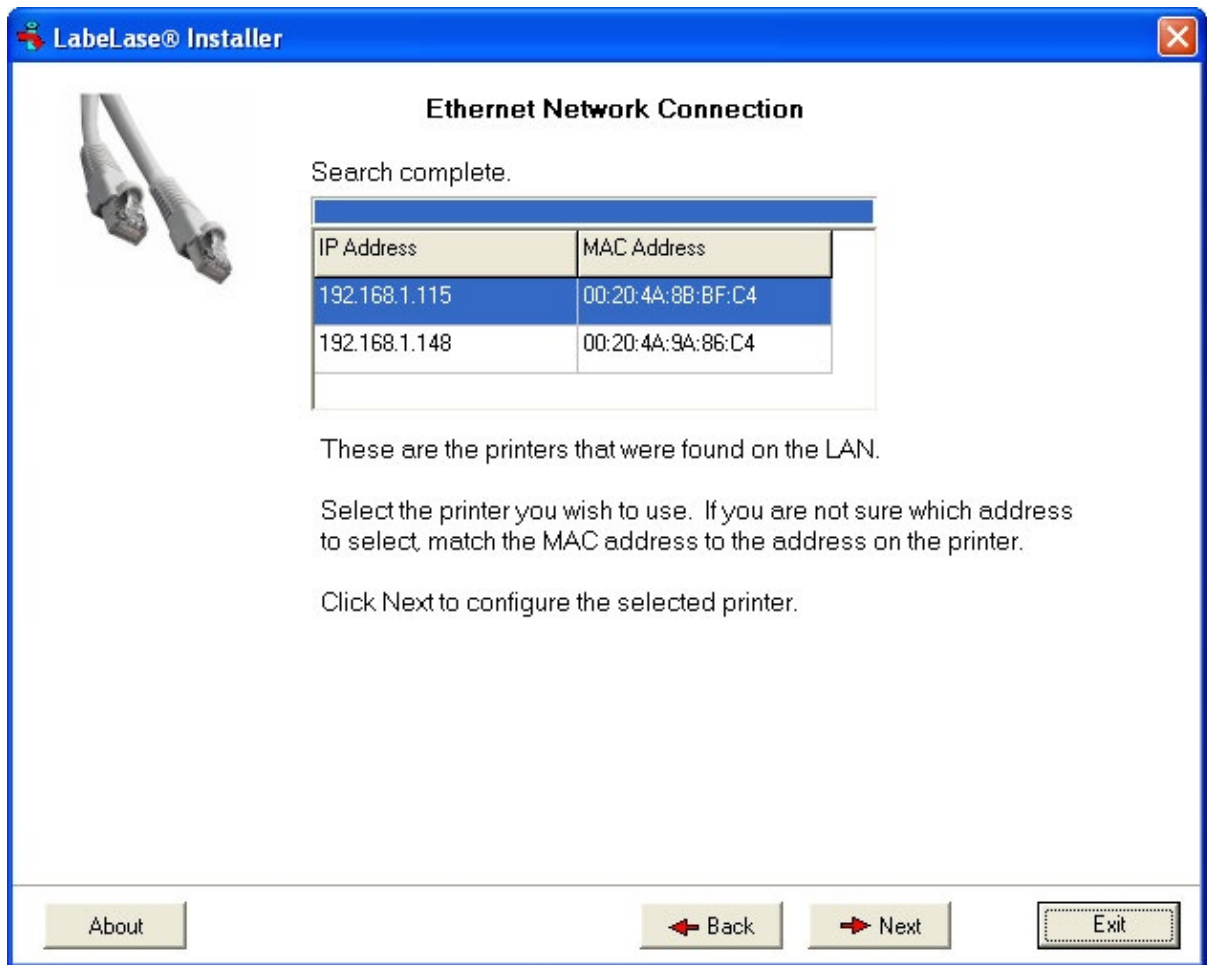
Select the method you will use and click the Next button.

---

- 7d The program will scan your LAN, as shown below, to find any Labelase® printers that are connected to your LAN.



7e After the initial search for the printers on the LAN, the following screen will be shown.



Note that more than one printer may be found on your network. You will need to know which printer you are connected based on its MAC address. The MAC address was previously found on a label on the back of the printer.

Note that the IP address of any un-configured printer may not be valid for your subnet. If that's the case, it will be shown in the color red. At this point, the MAC address is more important than the IP address so select the printer by its MAC address.

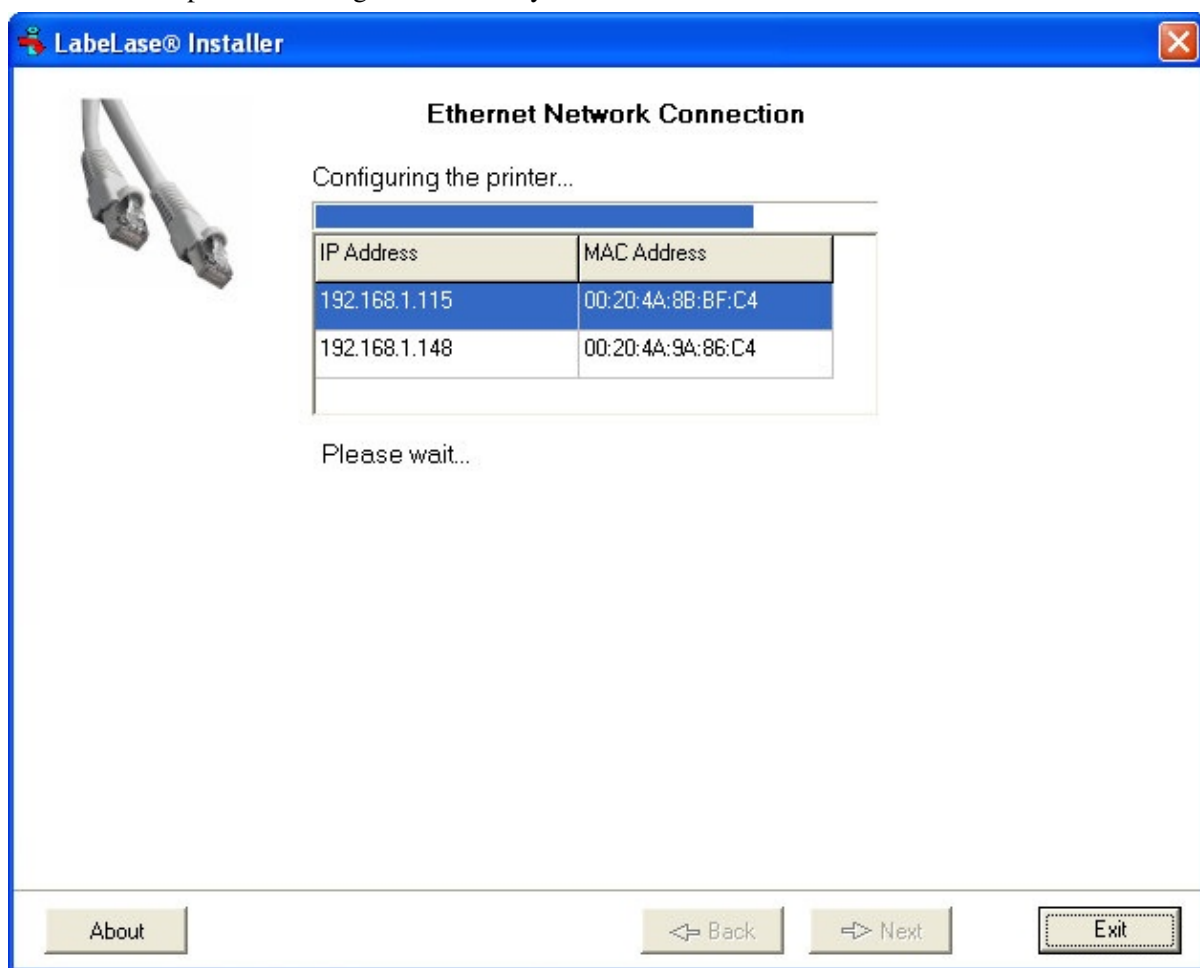
Highlight the printer you are installing and click the Next button.

If you had previously selected the dynamic method (DHCP server) of configuring the printer's IP address, proceed to step 7f below.

If you had selected the static method (manually assigned) of setting the IP address, skip to step 7g.

7f

**Dynamic IP Address** : If dynamically assigning the IP address, the configuration of the printer will begin immediately.

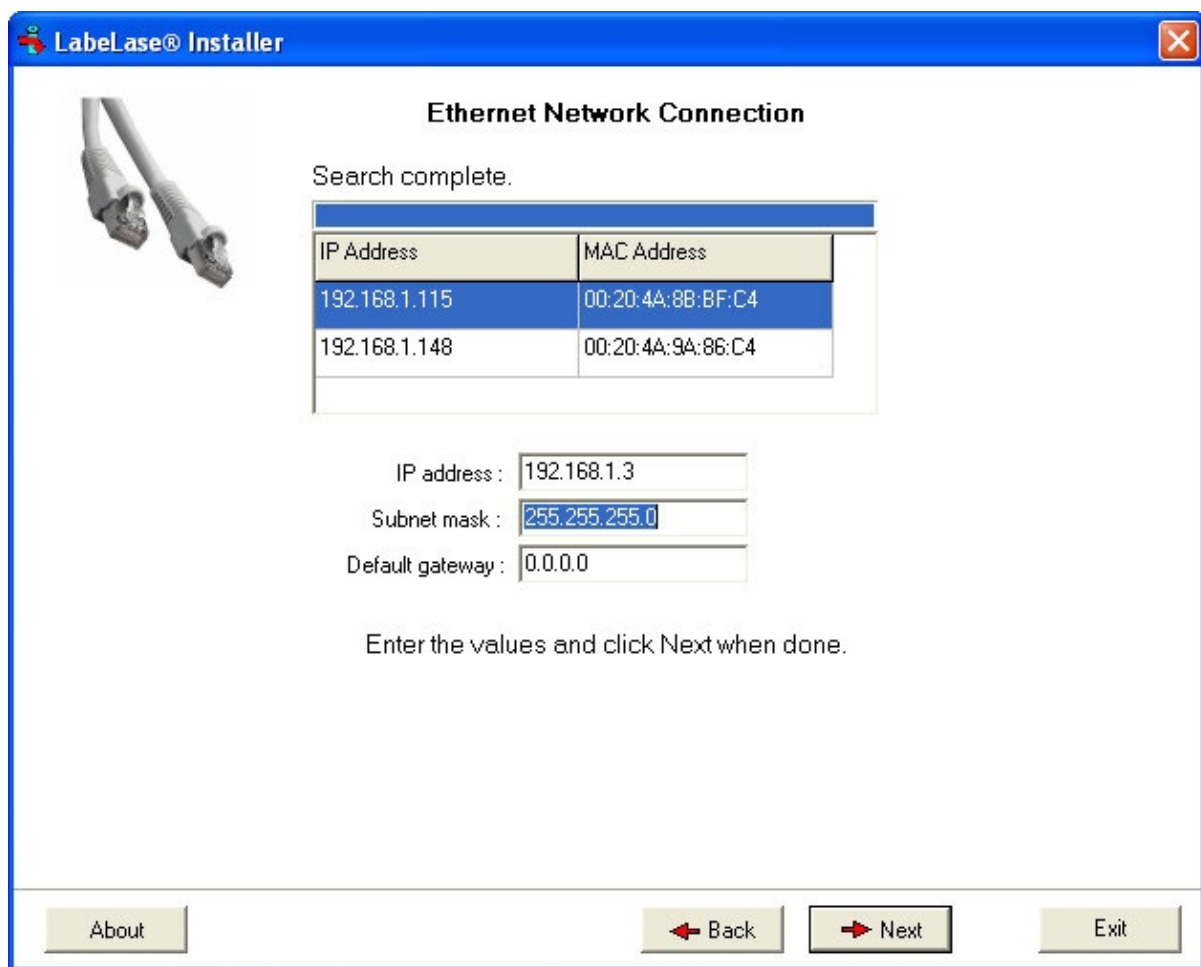


The configuration of the printer's IP address, subnet mask, gateway and communications parameters takes several seconds.

Skip to section 7h to complete the installation process.

7g

**Static IP Address** : If statically assigning the IP address, the following screen will require you to enter the necessary information.

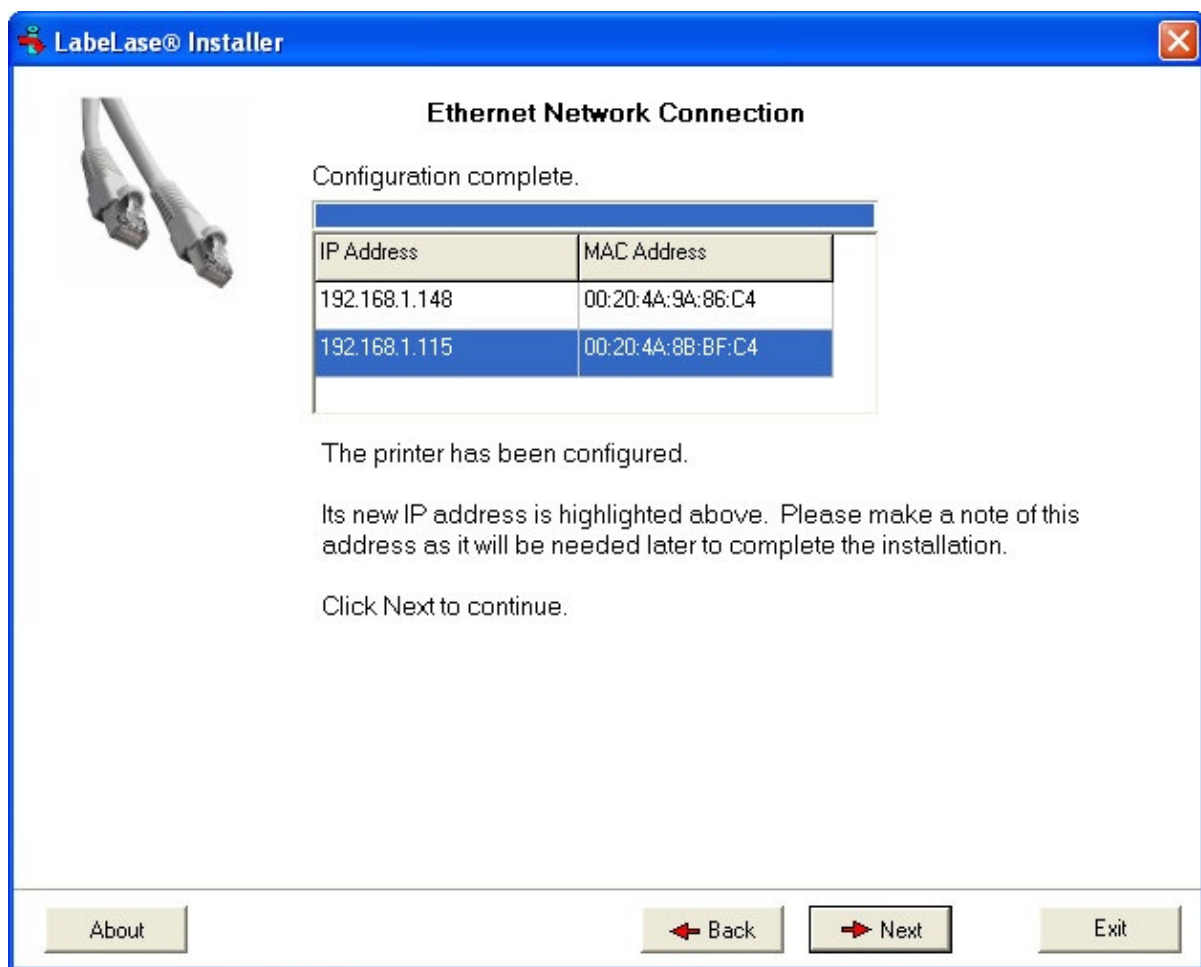



On this screen, enter the printer's static IP address, its subnet mask and default gateway. When you first enter the IP address, the program will calculate the subnet mask for you based on the class of the IP address. You may modify this computed subnet mask if you wish.

After entering the required information, click Next to continue with the configuration process.

7h

When the configuration is complete, you will see the screen shown below. Note that the IP addresses shown in this figure are for example only and do not reflect what you may actually see.

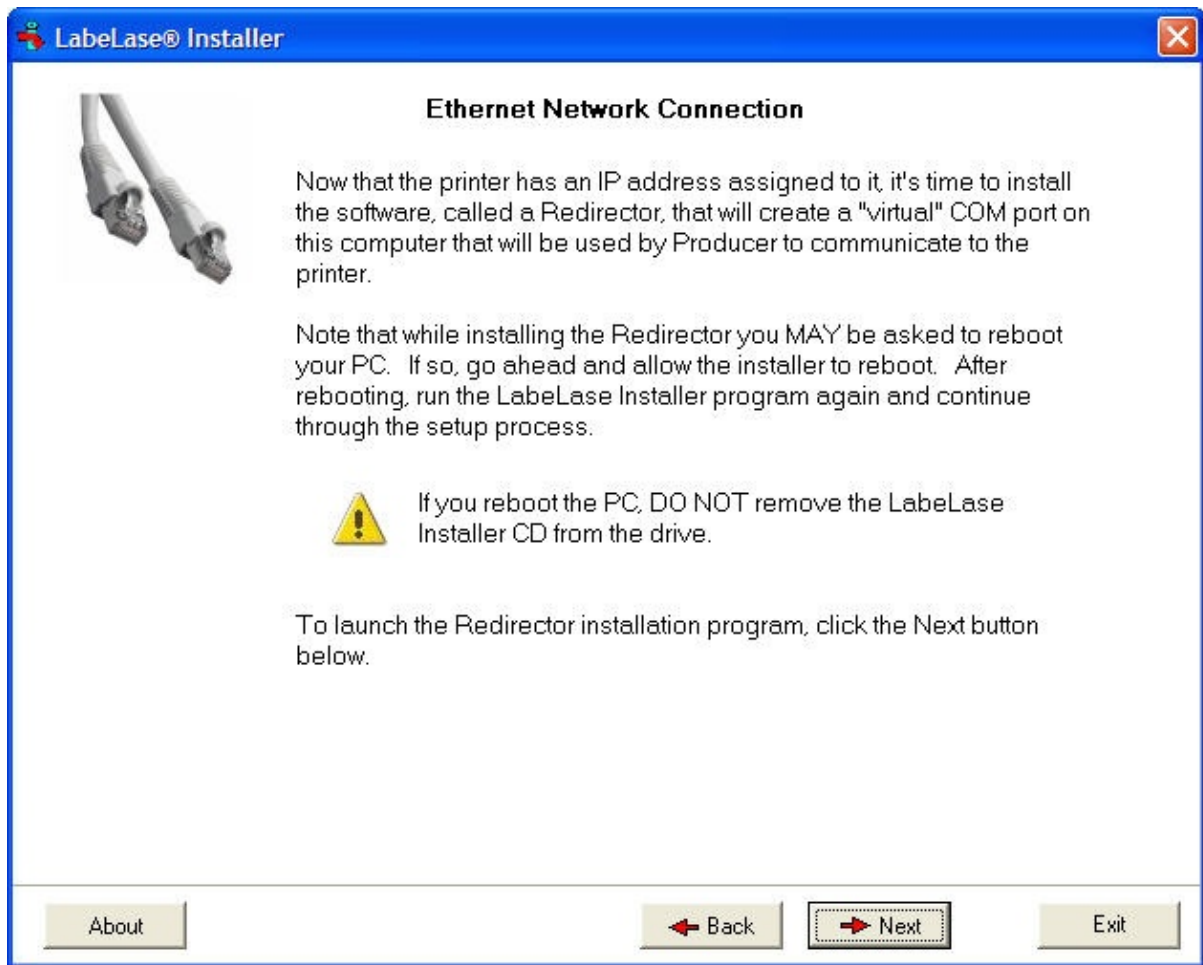


 Note that Windows may issue a warning that it has blocked the installer from acting as a server. If you see this warning, tell Windows to unblock the program.

Click Next to continue.

---

**7i** After the printer has its IP address, you must install the COM Port Redirector software.



When you click the Next button, the program will begin to install the COM Port Redirector (Redirector) software on your PC. This is the software that will create the "virtual" COM port used by Producer to talk to the printer.

During installation of the Redirector, you may be required to reboot your PC. If so, go ahead and reboot. The Labelase® Installer (this program) will run itself again automatically after the reboot and continue where it left off by running the Redirector.

Click Next to begin installing the Redirector.

---

7j

When the Redirector installer starts, it must first unpack its installation files into a folder on your PC. The screen below allows you to change the default location for these installation files.

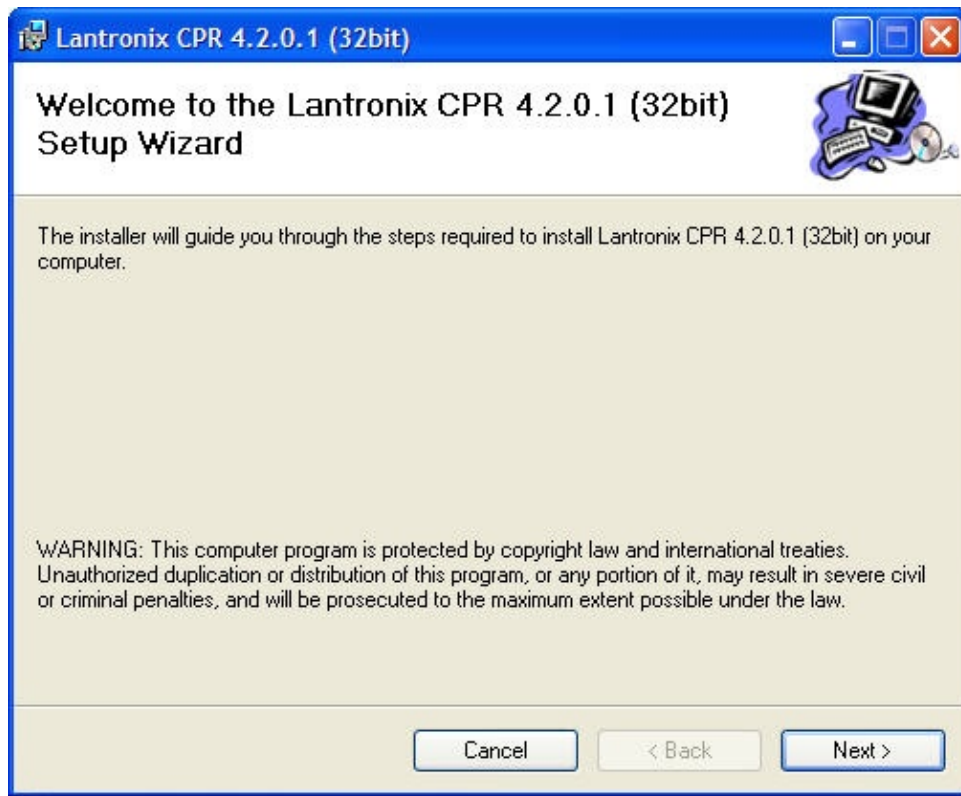


We recommend that you keep the default installation folder and click Next to continue.

7k

The Redirector installation files have been unpacked; the final installer program will run as shown below.

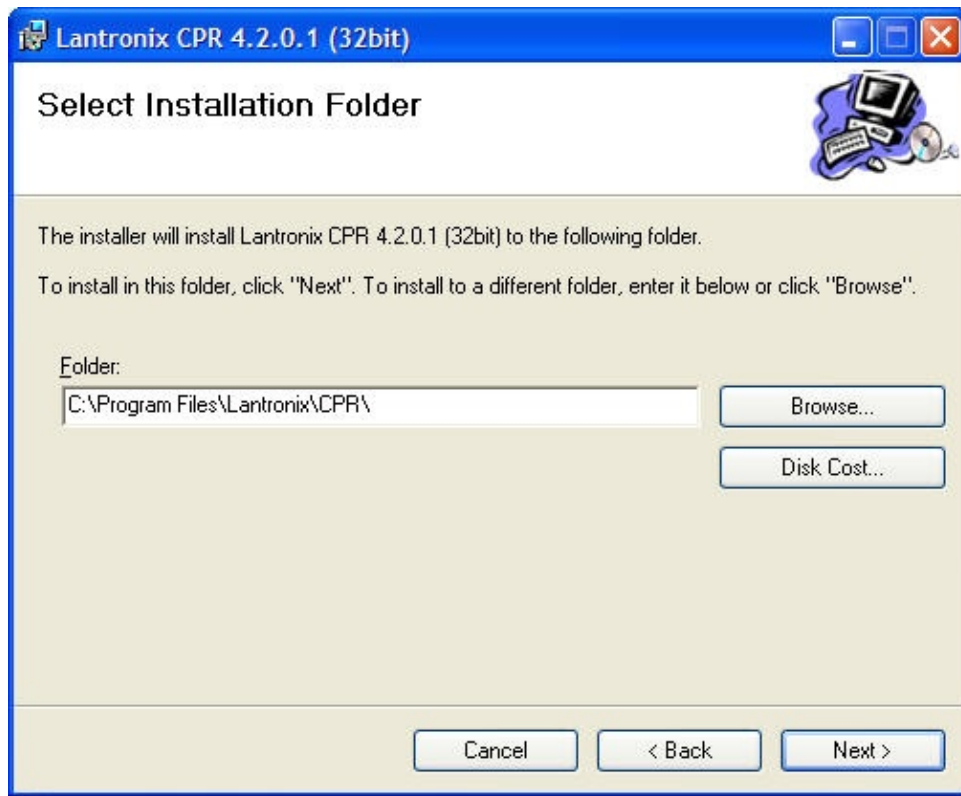




Click Next to continue.

---

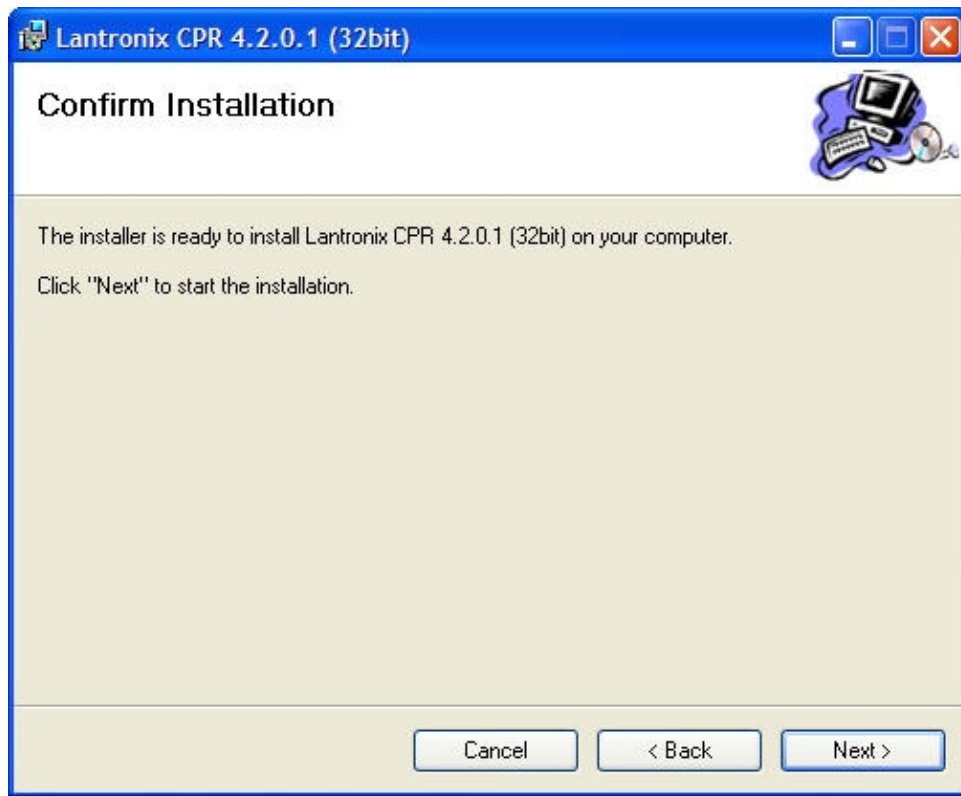
71 Choose the installation folder for the Redirector if you must.



We strongly recommend that you let the Redirector install itself in its default folder. This will make it easier for the Labelase® Installer to find and run the Redirector after it is installed. If you choose to install it in a different folder, you will be asked to find the program when the Labelase® Installer resumes.

---

**7m** The installer is now ready to install the Redirector on your computer.

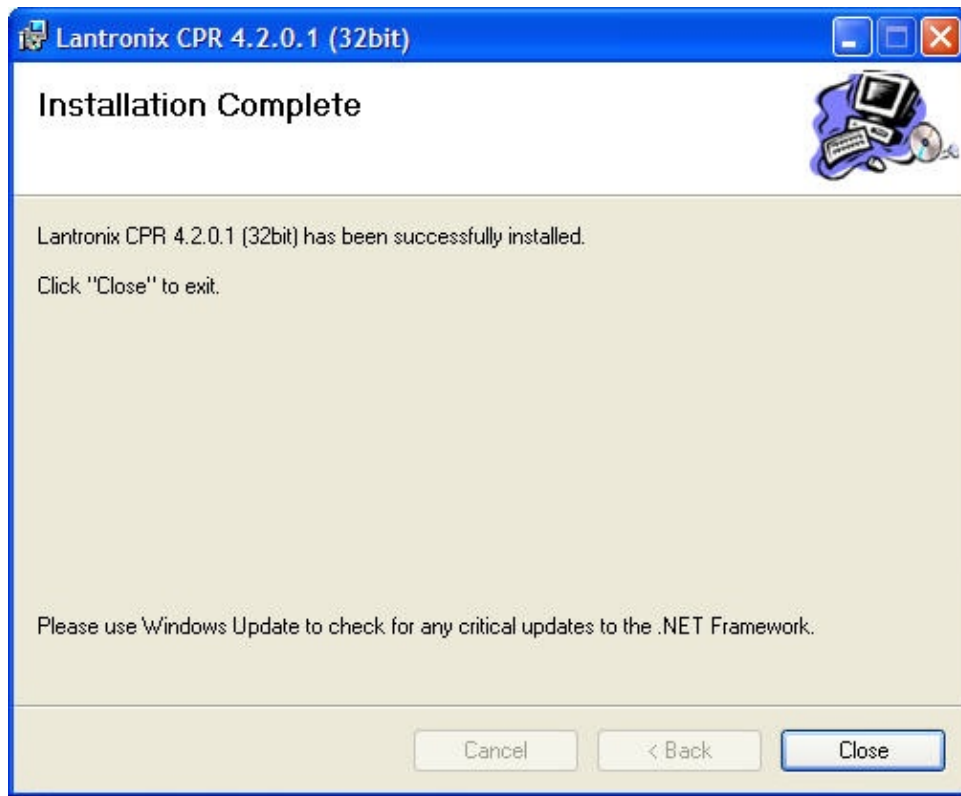


Click Next to continue.

---

7n

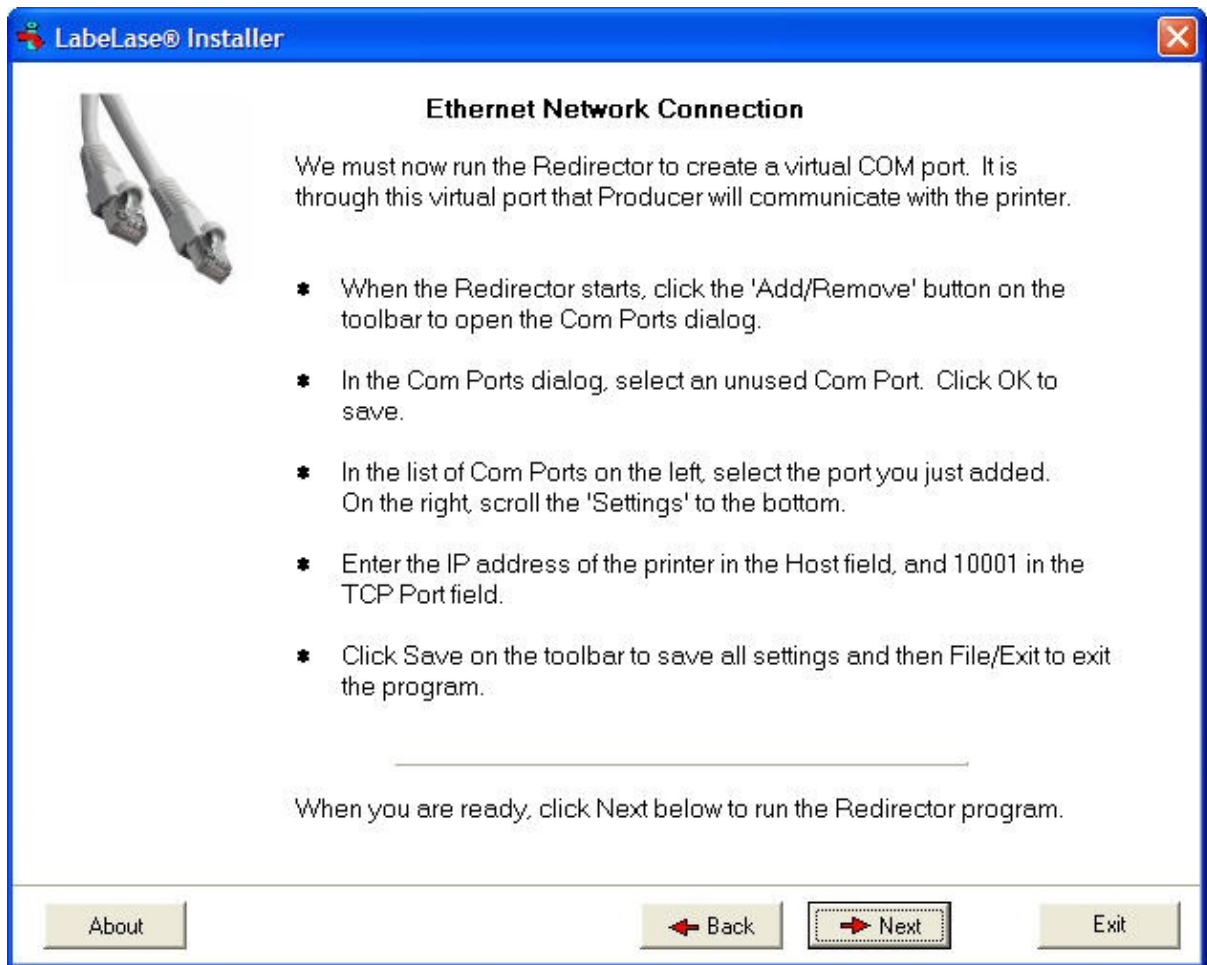
After the Redirector is installed, you may be required to reboot your computer. In most installations, rebooting is not required. However, sometimes it is necessary to reboot after installing the Redirector.



If you are told to reboot, we strongly recommend that you reboot your computer before proceeding. After you reboot, you must run the Labelase® Installer again and proceed through the Ethernet setup process. It will then be able to run the Redirector that was just installed.

---

- 70 After your PC has been rebooted, the Labelase® Installer will resume where it left off, showing the screen below.

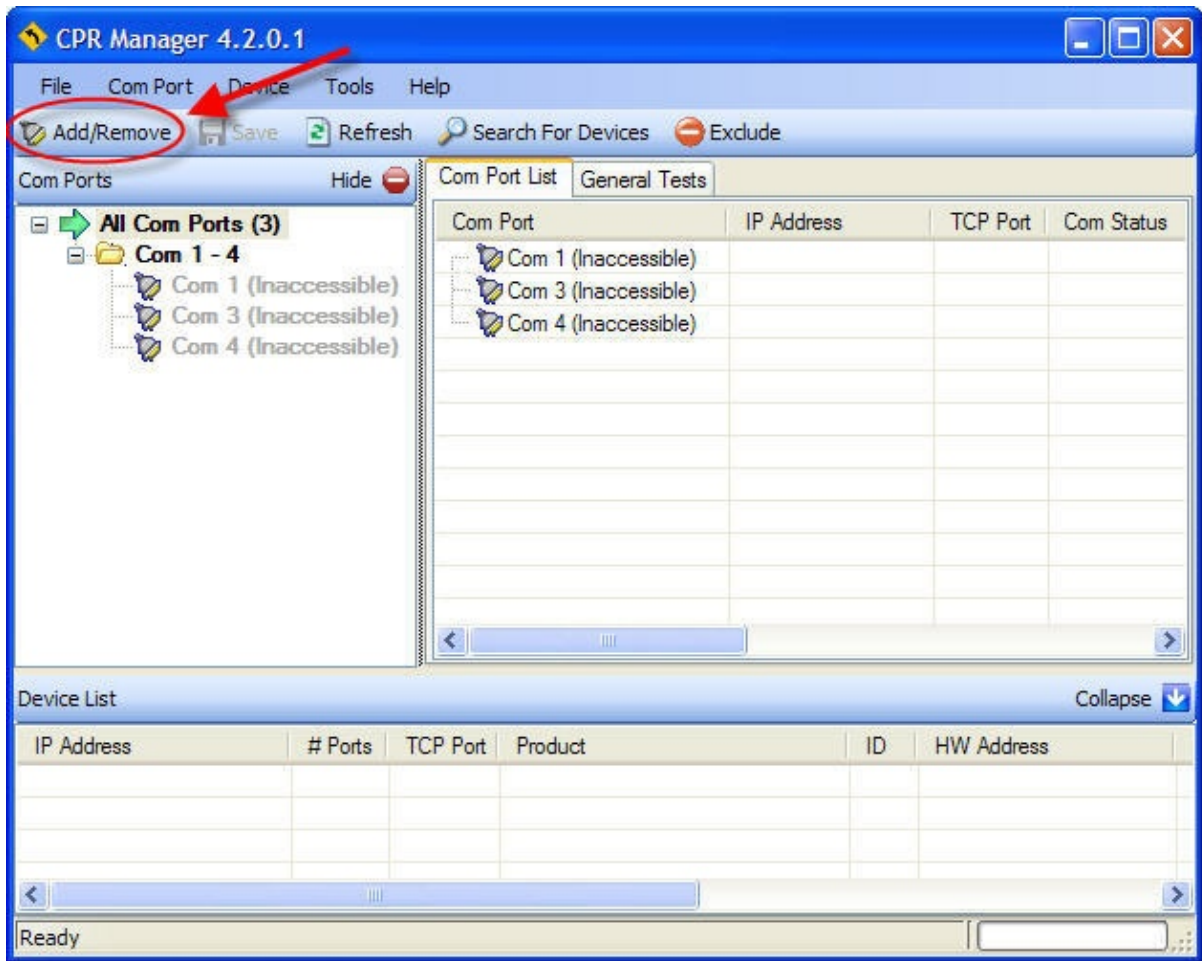


This screen gives you an overview of the next process, which will be to run the Redirector and add a virtual COM port to your PC.

Please review these steps and click Next when you are ready to run the Redirector.

7p

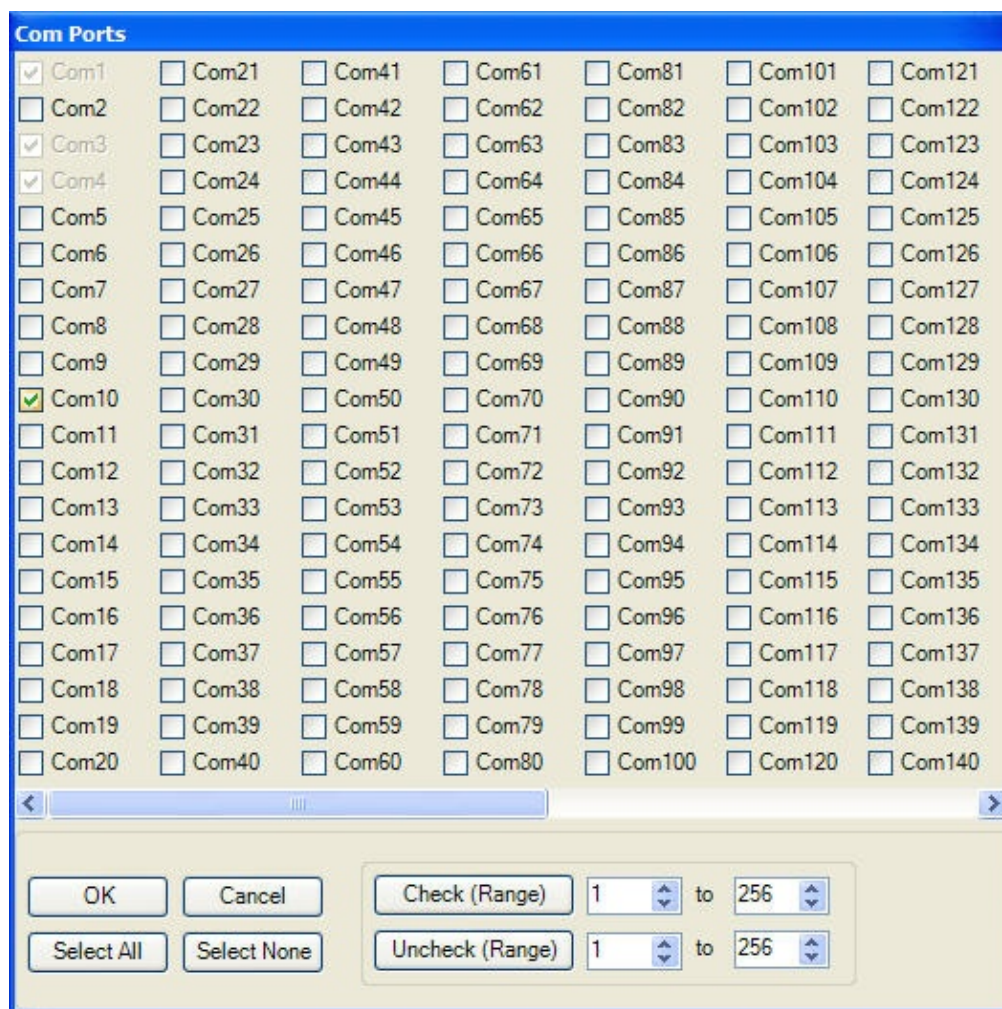
When the Redirector runs, you will see a screen similar to the one below. Note that the COM port names shown here are for example only, and may be different on your PC.



To begin, click the Add/Remove button on the toolbar. This will open the Com Ports dialog that allows you to select the name of the new port.

7q

After click the Add/Remove button, the Com Ports dialog will allow you to select an available COM port number to be used to connect to your printer.

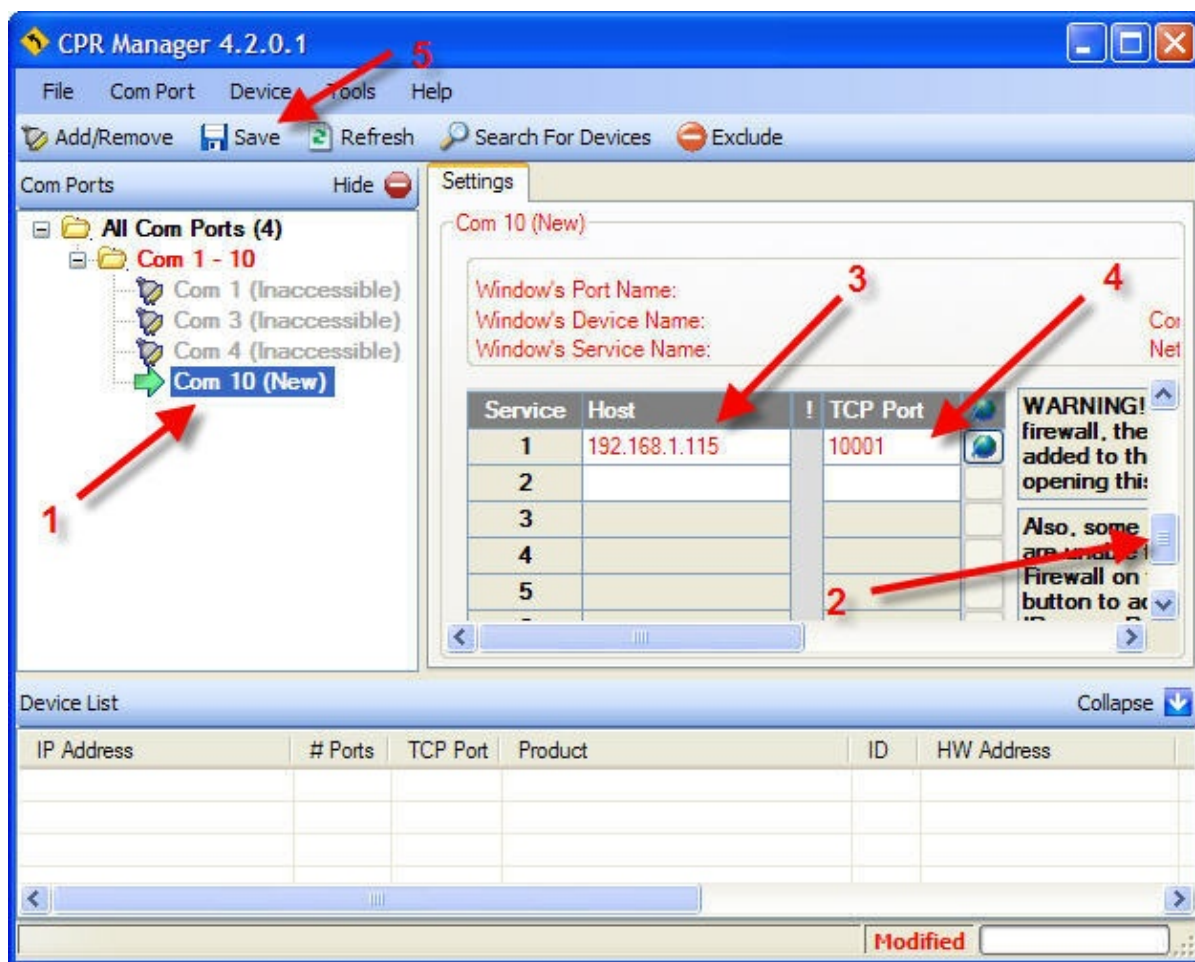


Select an unused COM port and click the OK button to continue.

---

**7r** After selecting a COM port number, you must configure the port as shown below:



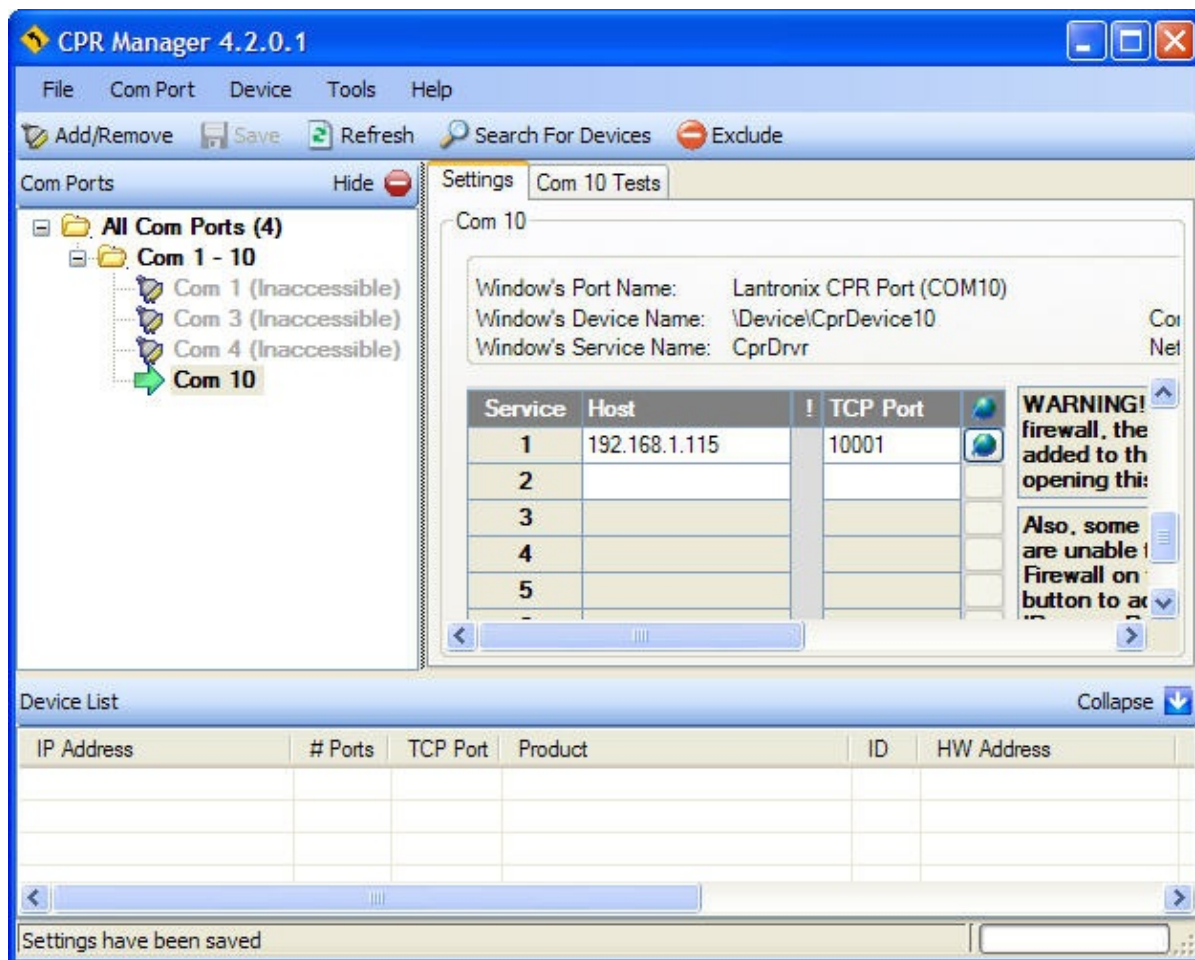


In order to create a virtual COM port (COM10 in this example) you must add an IP address to associate with it. The address we are going to add will be the IP address that was previously assigned to the printer.

- 1** - Highlight the new port that you just added.
- 2** - Scroll the Settings page to reveal the Host and TCP Port settings.
- 3** - Enter the IP address that you previously assigned to the printer. Note that the IP address shown here is for example only. You must enter your printer's IP address.
- 4** - Enter 10001 into the TCP Port field. This is the TCP port number that the printer will monitor for connections from the computer.
- 5** - Click the Save button on the toolbar. This will save your settings and create the new COM port. Note that if Windows warns you about security concerns with the new software, simply instruct it to "Continue Anyway".

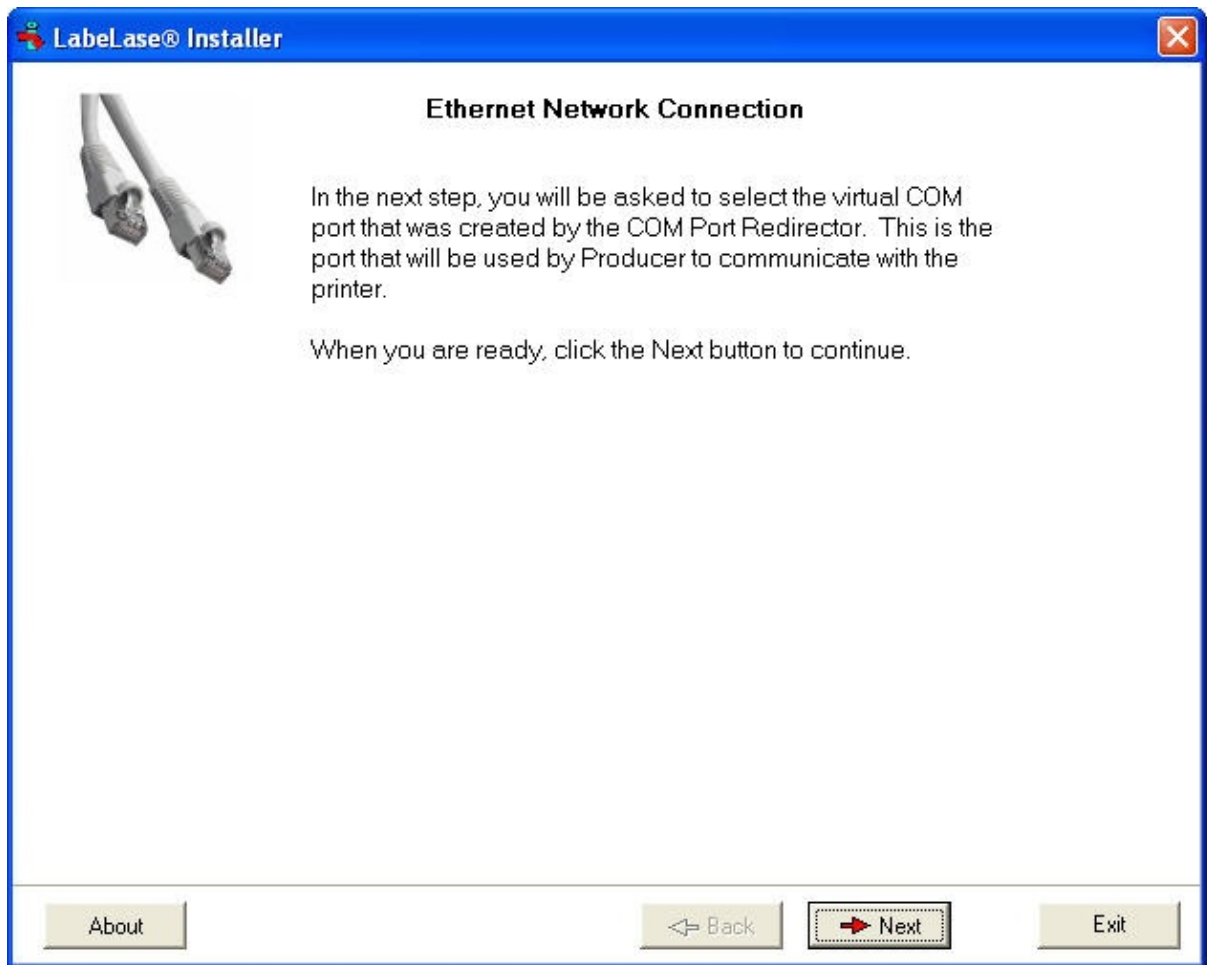


- 7s After saving your settings and confirming the new software with Windows (if necessary) you will see the screen shown below.



Select File / Exit to close the program. The Labelase® Installer program will resume.

- 7t The Redirector now has added a virtual COM port to your PC.



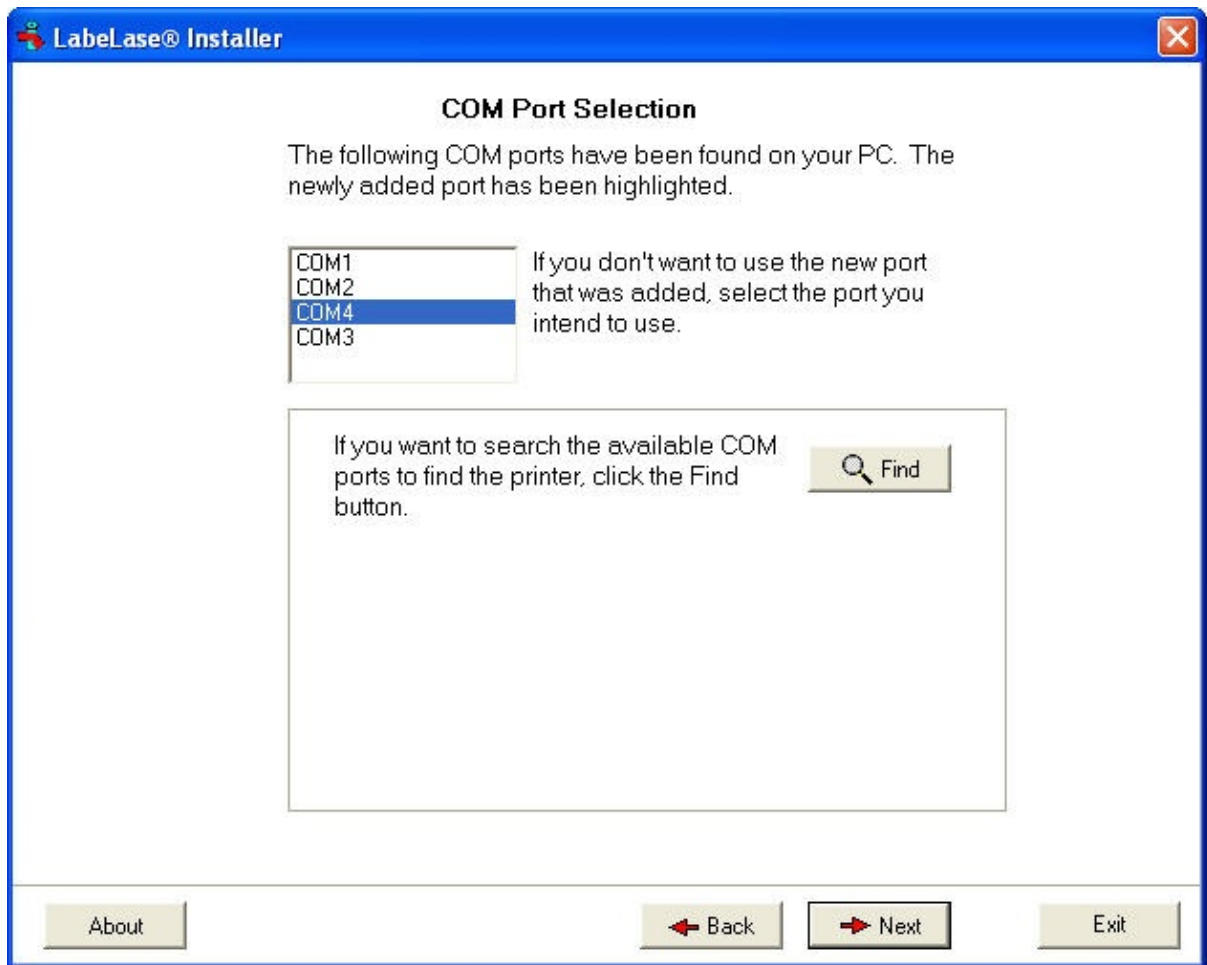
You must now select this new port to be used by Producer. Click Next to continue.

---

After you have installed the Redirector, you will see a screen that looks similar to the one shown below.

7u

Note that the actual list of COM ports will vary from this figure depending on the number of ports that are installed on your PC. The port numbers shown are for demonstration purposes only.



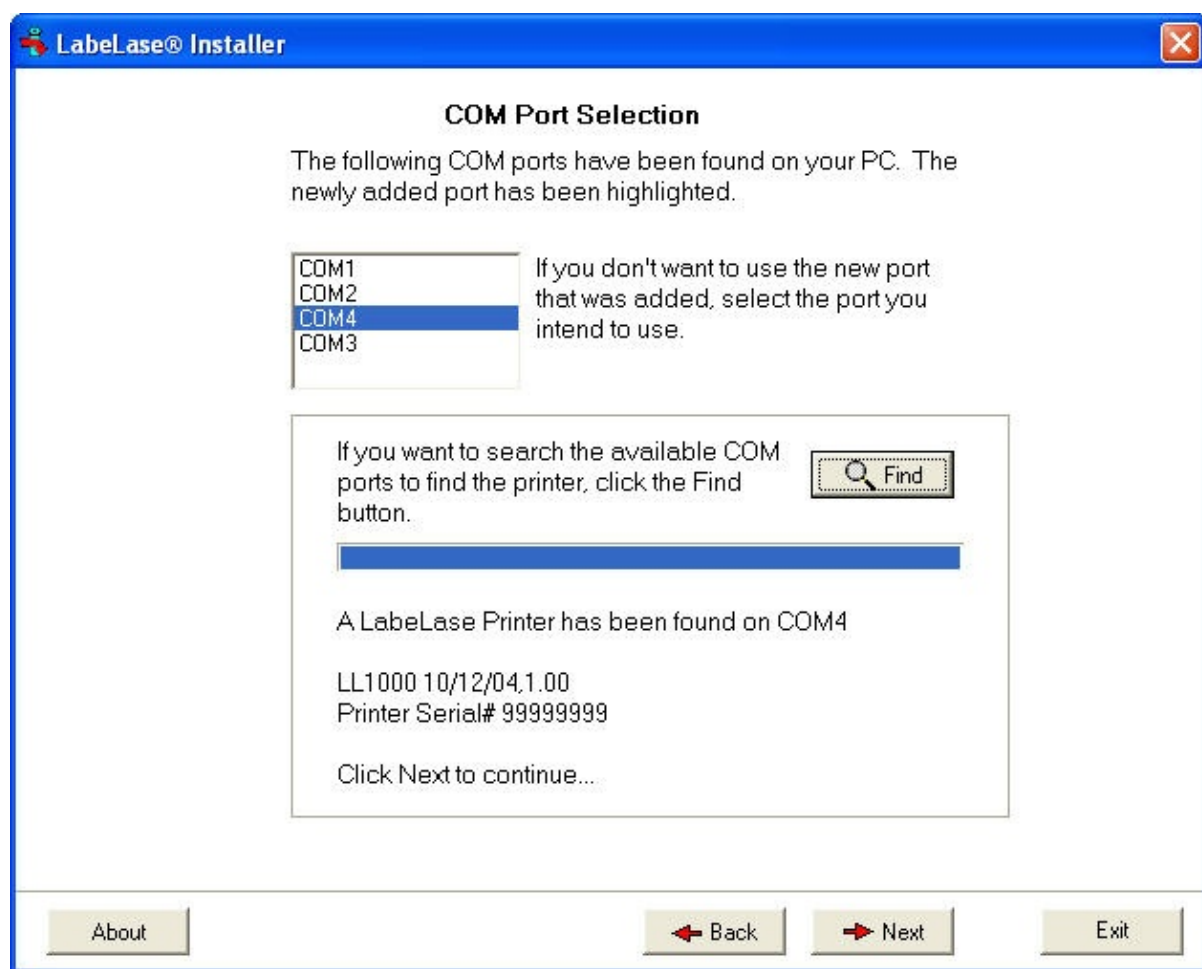
The installer program detected the addition of COM4 when the Redirector was installed, so it has highlighted that port name in the list. If you wish, you can now click Next to continue to the next step.

If you want to test the port to make sure it can communicate to the printer, proceed to step 7v below.

Note that if you are running this installation program for a second time, you may have already added the new COM port during the previous installation. In that case, the installer will not detect the addition of a new port so you will be required to select it yourself in the list of ports before you can continue.

7v

If you're not sure what the port name is or you want to test the port connection, click the Find button. The program will attempt to communicate with the printer on each of the COM ports in the list.



As you can see in the figure above, the program found a LL1000 model printer on the COM4 port. It has displayed its model number, firmware version and the printer's serial number.

---

**7w** Once you have selected or found the COM port that the printer is attached to, click the Next button to continue.

If you did not use the Find button, or the program was not able to communicate with the printer, then you will continue to [Step 8](#) where you will select your printer model from a list.

If you used the Find button, and the program successfully found and communicated with the printer, you will skip to [Step 9](#) where you will install the version of Labelase® Producer that is appropriate for your printer model.

---

**Copyright © 2018 InfoSight Corporation All Rights Reserved**  
**InfoSight and LabelLase are registered trademarks of InfoSight Corporation**

# Labelase® Producer

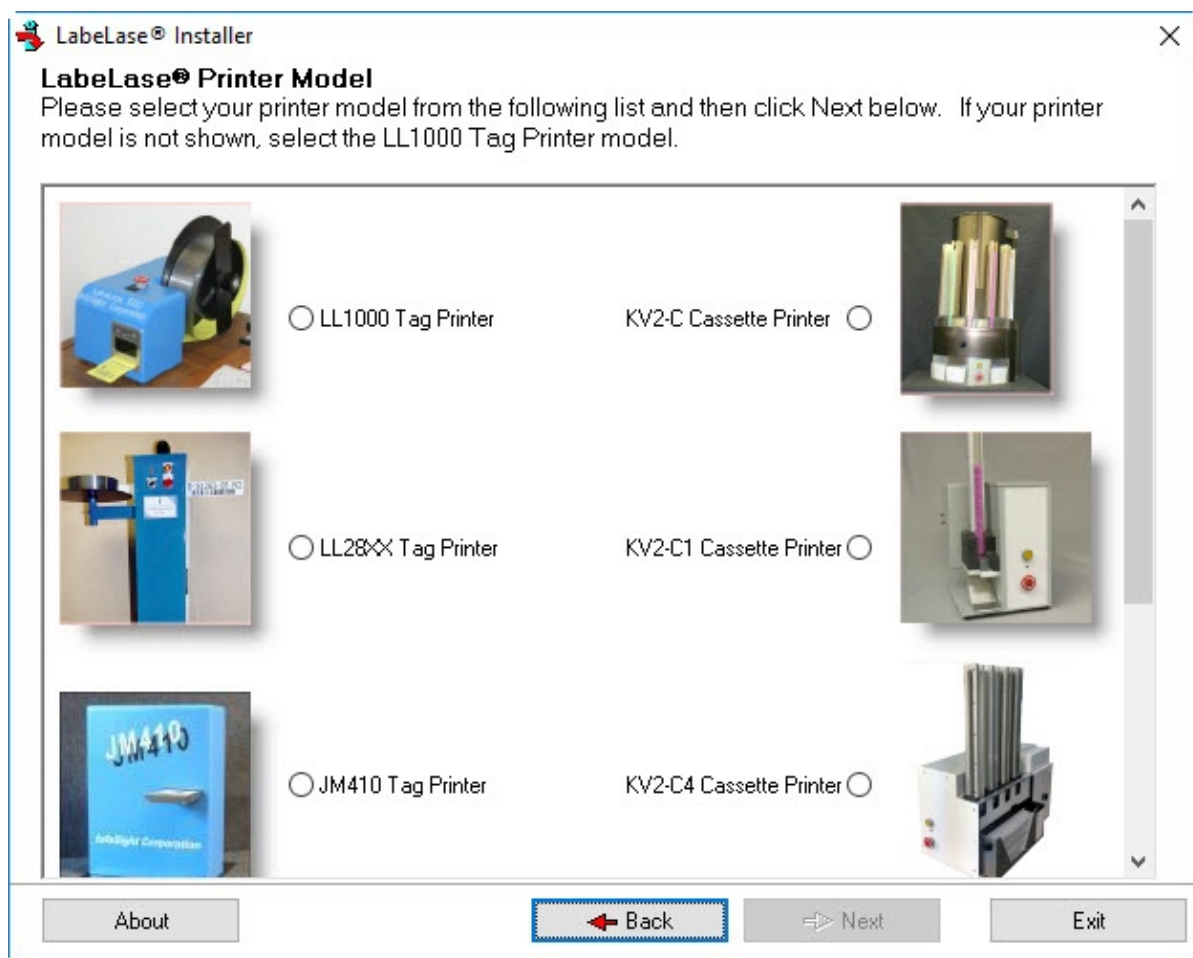
## Printer Model

8 The version of Labelase® Producer that you need to install depends on your printer model.

If you used the Find method to locate a printer on one of your COM ports, and the printer's model and version information were found and displayed, then you don't need to manually select the printer model and you can skip to Step 9.

If, however, you did not run the Find procedure, or it did not actually find a Labelase® printer, then you will need to manually select your printer model.

8a The printer model selection screen is shown below.



You must select one of the printer models shown in this screen. You may need to scroll down to find

## Labelase Producer - Software Installation Manual

your particular printer model. If your model is not shown here, select the LL1000 Tag Printer.

Once you have selected your printer model, click Next to continue to Step 9 where you will install Labelase® Producer.

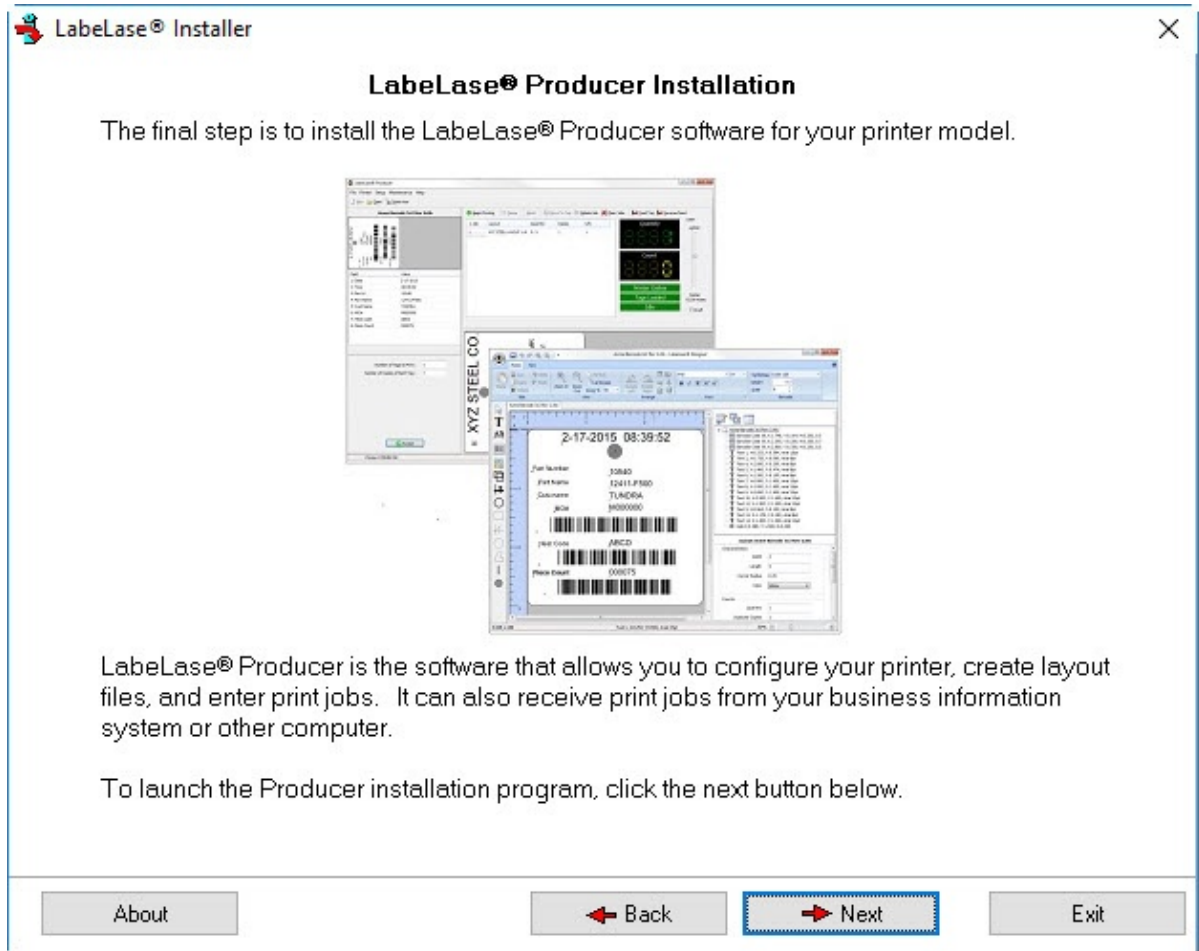
---

Copyright © 2018 InfoSight Corporation All Rights Reserved  
InfoSight and Labelase are registered trademarks of InfoSight Corporation

# Labelase® Producer

## Installing Labelase® Producer

- 9 The last step in setting up your Labelase® Printer is to install the Labelase® Producer software.

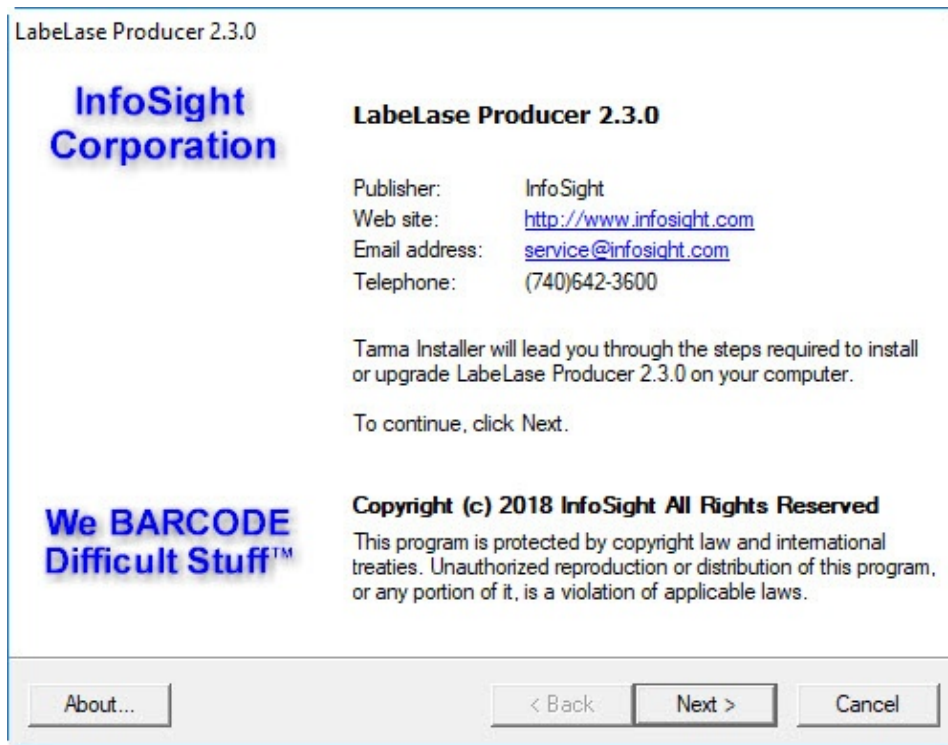


Labelase® Producer is the software that allows you to configure your printer, create layout files, and enter print jobs.

To launch the Producer installation program for your model printer, click Next.

- 9a The Labelase® Producer installation program will run as shown below.





In this example, the installer for the metal tag printer model (LL1000) has been launched. Note that the version number of your specific printer/software may differ than that shown here.

Follow the instructions given by the installer to install LabelLase® Producer on your PC.

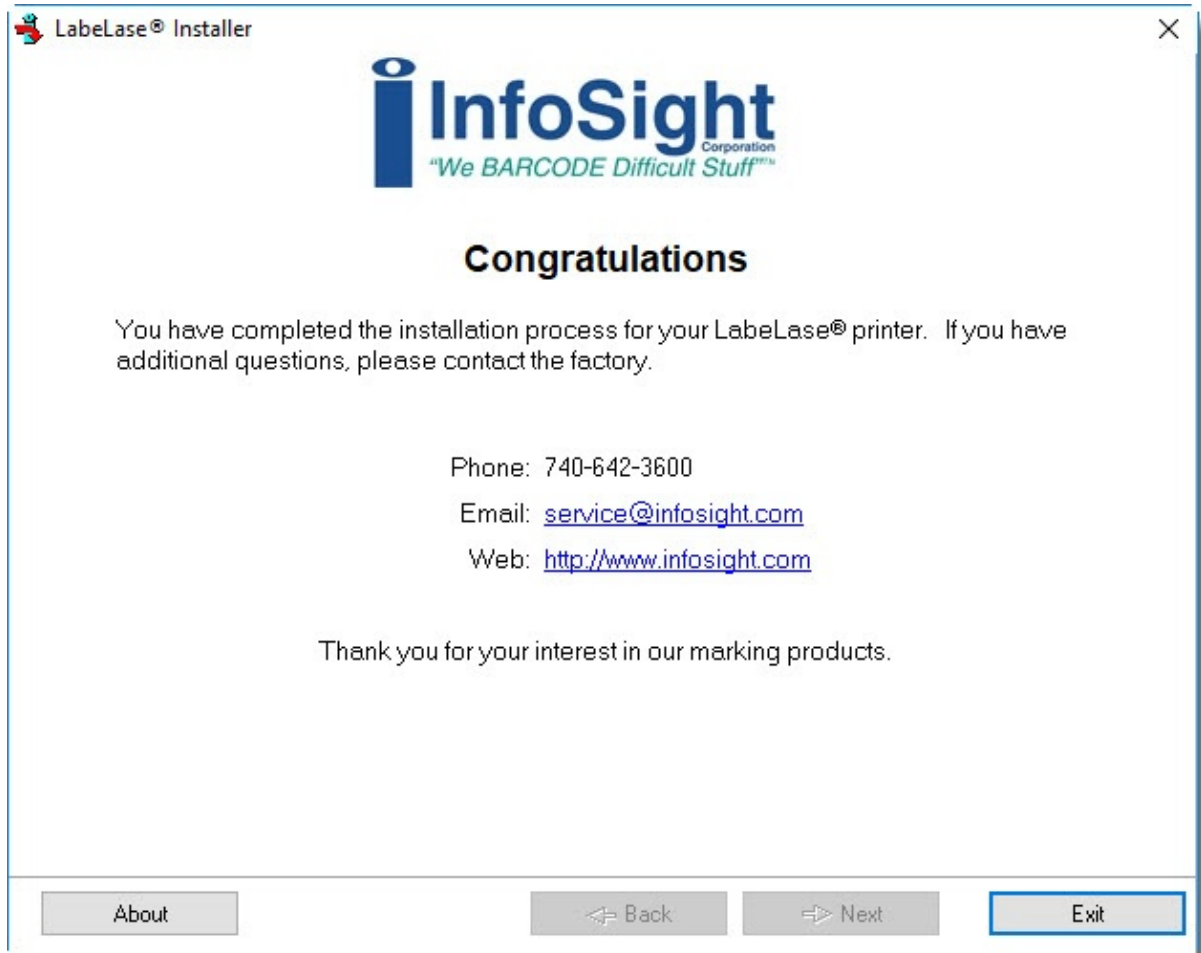
When the installation is complete, continue on to Step 10.

Copyright © 2018 InfoSight Corporation All Rights Reserved  
InfoSight and LabelLase are registered trademarks of InfoSight Corporation

# Labelase® Producer

## Finished

10 Congratulations on successfully installing your Labelase® Printer.



If you have any additional questions, please contact the factory for assistance.

Thank you for your interest in our marking products.

Copyright © 2018 InfoSight Corporation All Rights Reserved  
InfoSight and Labelase are registered trademarks of InfoSight Corporation